

OKI FY 2007

UNIFIED PLANNING WORK PROGRAM

Executive Summary



720 East Pete Rose Way, Suite 420
Cincinnati, Ohio 45202

www.oki.org

Phone: (513) 621-6300

Fax: (513) 631-9325

TTY: (513) 621-6300

April 11, 2006

INTRODUCTION

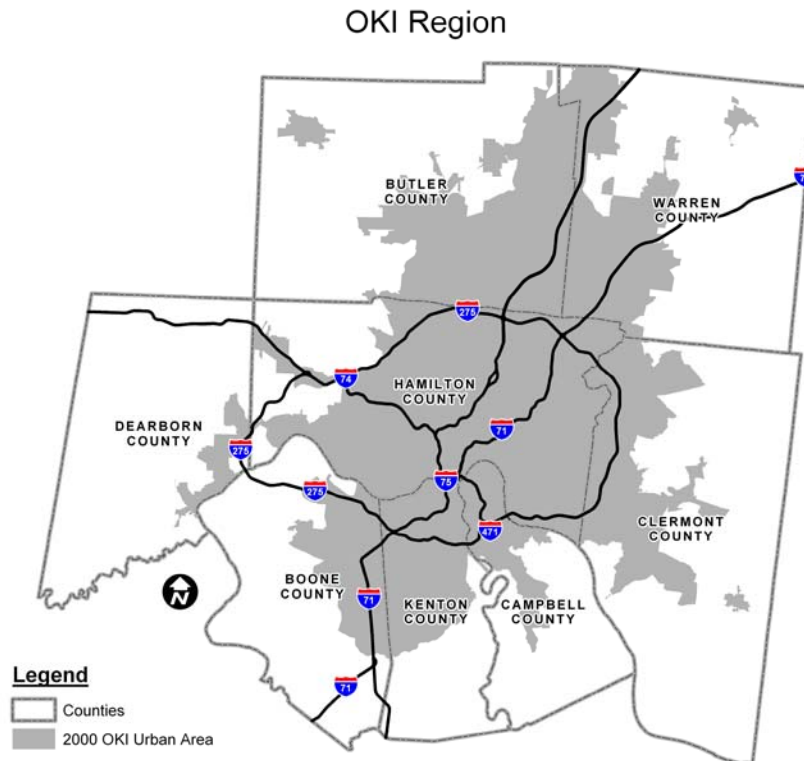
INTRODUCTION

The Fiscal Year 2007 Unified Planning Work Program (UPWP) outlines the scope of work to be undertaken by OKI for the period beginning July 1, 2006 and ending June 30, 2007. This document illustrates the relationship between adopted goals, objectives and program activities. It outlines the general nature of these program elements, which are summarized by general categories, and are referenced to specific projects by project number. Funding for development of this document is spread among the various programs included. Also included in this document is the agency prospectus which provides the framework for the remainder of the document and consolidates key interagency agreements according to OKI by-laws.

Primarily a management tool for planning and coordination, the UPWP provides the basis for cataloging and integrating OKI's activities into general categories. It delineates the programmatic and fiscal relationships essential for internal planning and programming.

STUDY AREA

The OKI region embraces an area of 2,636 square miles, with a population of 1,886,650 (Census 2000) in Butler, Clermont, Hamilton and Warren counties in the State of Ohio; Boone, Campbell and Kenton counties in the Commonwealth of Kentucky; and Dearborn County in the State of Indiana. The OKI region is part of the 15-county Cincinnati-Middletown, OH-KY-IN Metropolitan Statistical Area (June 2003 definition) with a population of 2,009,632 (Census 2000).



ORGANIZATIONAL STRUCTURE

OKI is governed by a Board of Trustees and an Executive Committee. The Board of Trustees is empowered to control all activities of the Council of Governments. The Executive Committee has all the powers necessary to act in the name of the trustees. The Board of Trustees elects a President, First Vice-President, Second Vice-President and Treasurer. The OKI Executive Director serves as Secretary. The term of office for the members of the Board of Trustees, Executive Committee and elected officers is one year or until successors have been selected and qualified. The President serves as the Chairperson of the Executive Committee.

The Board of Trustees consists of:

- One official elected by the governing body of each member county;
- One elected official from each municipal corporation having a population over 5,000 (if any state in the region does not have a municipal corporation of this size, this member will be selected from the elected officials of the largest municipal corporation in the region within the state);
- One person selected by each area or county planning agency within the region;
- One person selected from each municipal planning agency of any municipal corporation having a population of over 40,000;
- Not more than ten non-elected residents of the OKI region;
- Such other elected officials, or persons responsible to elected officials, that the Board of Trustees may wish to select in accordance with the By-laws;
- One person selected to represent each of the state Departments of Transportation.

The constituency of the elected public officials of the Board must represent 75 percent of the aggregate population of the OKI region, and at least two-thirds of the trustees must be officials elected by the residents of the region.

The Executive Committee consists of:

- The President, First Vice-President, Second Vice-President and Treasurer of the Board of Trustees;
- One trustee who is an official elected to the governing body of each member county, selected by such governing body;
- One trustee selected from each municipal corporation having a population exceeding 40,000;
- Three trustees selected from a municipal corporation having less than 40,000 (one from each state);
- One trustee selected from each regional planning agency;
- Three additional trustees selected by the Board;
- One representative each from the Transit Authority of Northern Kentucky Board of Directors and the Southwestern Ohio Regional Transit Authority Board of Directors; and
- Representatives from the State Departments of Transportation.

Each member of the Executive Committee, with the exception of the non-elected residents, is allowed to name an alternate with all powers (including voting) to represent him or her at any Executive Committee meeting in his or her absence. The constituency requirements and length of term for the Executive Committee are identical to that of the Board of Trustees. The Board and/or the Executive Committee may create any committees they deem appropriate and necessary. Current standing committees include the Budget Committee (a subgroup of the Executive Committee), Intermodal Coordinating Committee (ICC), Groundwater Committee, ARTIMIS Advisory Committee, Regional Incident Management Task Force, OKI Land Use Commission, and the Environmental Justice Advisory Committee.

The Executive Director is the administrator of OKI, responsible for carrying out the policies and programs of the Board of Trustees and its Executive Committee and applicable federal and state laws and

regulations. The Executive Director has the authority to employ, assign, supervise and release all employees of OKI, within the framework and general limitations and policies established by the Board of Trustees and its Executive Committee.

2006 OFFICERS

President	Gary W. Moore
First Vice President	Christine Matacic
Second Vice President	Steve Pendery
Treasurer	Mary C. Walker
Secretary	Mark R. Policinski

EXECUTIVE COMMITTEE

Ken Bogard	Ralph B. Grieme, Jr	Steve Pendery
William Brayshaw	Jeff L. Hughes	Kenneth F. Reed
Robert T. Craig	Gregory Jolivette	Tom Schomaker
John Cranley	Martin Judd	Glenda Seal
Bill Cunningham	Stephan Louis	Jerry Stricker
Pat DeWine	David B. Malone	Mary C. Walker
Tom Dix	Diana Martin	Robert Wells
Ralph A. Drees	Melvin Martin	David G. Young
Elizabeth Fennell	Christine Matacic	
Christopher D. Flaig	Gary W. Moore	

2006 OKI BOARD OF TRUSTEES

MEMBER COUNTIES

Gary W. Moore, Boone County Fiscal Court
Gregory Jolivette, Butler County Board of Commissioners
Steve Pendery, Campbell County Fiscal Court
Mary C. Walker, Clermont County Board of Commissioners
Jeff L. Hughes, Dearborn County Board of Commissioners
Pat DeWine, Hamilton County Board of Commissioners
Ralph A. Drees, Kenton County Fiscal Court
David G. Young, Warren County Board of Commissioners

MUNICIPALITIES WITH POPULATION OVER 5,000

W. David Hart, Alexandria, KY
Tom Ratterman, Bellevue, KY
James W. Sumner, Blue Ash, OH
Greg Stautberg, Cheviot, OH
John Cranley, Cincinnati, OH
Jerry Stricker, Covington, KY
Robert Allen, Dayton, KY
Christine Hedger, Deer Park, OH
Mark Steffen, Edgewood, KY
Gloria Grubbs, Elsmere, KY
Keith Henry, Erlanger, KY
Martin H. Judd, Fairfield, OH
Julie Metzger, Florence, KY
Wynndel Burn, Forest Park, OH
Thomas E. Holocher, Ft. Mitchell, KY
Mary H. Brown, Ft. Thomas, KY
Gene Weaver, Ft. Wright, KY
Christopher D. Flaig, Hamilton, OH
Joel McGuire, Harrison, OH
Charles W. Roettger, III, Highland Heights, KY
Kent Kelso, Independence, KY
Joseph Beech, III, Indian Hill, OH
Bill Cunningham, Lawrenceburg, IN
Jeffrey D. Monroe, Ph.D., Lebanon, OH
Todd Osborne, Loveland, OH
Rob Steirer, Madeira, OH
Tom Grossmann, Mason, OH
Robert Wells, Middletown, OH
Lou Bishop, Milford, OH
Robert Kelley, Monroe, OH
Lynda Roesch, Montgomery, OH
William DeBruler, Mt. Healthy, OH
Beth Fennell, Newport, KY
Thomas R. Graves, North College Hill, OH
Brigid Kelly, Norwood, OH
Kenneth H. Bogard, Oxford, OH
Robert Ashbrock, Reading, OH
Virgil G. Lovitt, II, Sharonville, OH
Mark Quarry, Silverton, OH
John H. Agenbroad, Springboro, OH
Edward F. Knox, Springdale, OH
Greg Zix, St. Bernard, OH
Mark Kreimburg, Taylor Mill, KY
Raymond L. Nichols, Trenton, OH
Mike Sadouskas, Villa Hills, KY
Jim O'Reilly, Wyoming, OH

COUNTY PLANNING COMMISSIONS

Greg Breetz, Boone County Planning Commission
Michael F. Juengling, Butler County Planning Commission
Jennie Webber, Campbell County Planning & Zoning Commission
Louis M. Ethridge, Clermont County Planning Commission
Mark Mitter, Dearborn County Planning Commission
Melvin Martin, Hamilton County Regional Planning Commission
TBA – Kenton County Planning Commission
Ralph B. Grieme, Jr., Northern Kentucky Area Planning Commission
Robert T. Craig, Warren County Regional Planning Commission

PLANNING COMMISSIONS 40,000 OR MORE POPULATION

James Tarbell, Councilmember, Cincinnati (City) Planning Commission
Timothy Bachman, Fairfield (City) Planning Commission
Teri A. Whitmore, Hamilton (City) Planning Commission
Martin D. Kohler, Middletown (City) Planning Commission

VOTING EX-OFFICIO MEMBERS

Glenda Seal, Indiana Department of Transportation
Tom Schomaker, Kentucky Transportation Cabinet
Diana N. Martin, Ohio Department of Transportation
Stephan Louis, Southwest Ohio Regional Transit Authority
David B. Malone, Transit Authority of Northern Kentucky

BOARDS OF TOWNSHIP TRUSTEES

Chris Matacic, Butler County Association of Township Trustees & Clerks
Tom Dix, Clermont County Township Association
Craig E. Beckley, Dearborn County Association of Township Trustees & Clerks
Peggy D. Reis, Hamilton County Township Association
Elmo Rose, Warren County Association of Township Trustees & Clerks

OTHER ELECTED OFFICIALS

Vera Benning, Dearborn County Board of Commissioners
William Brayshaw, Hamilton County Engineer's Office
Courtney Combs, Ohio State Representative
Scott Crowell, Clermont County Board of Commissioners
Cathy Flaig, Boone County Fiscal Court
Michael Fox, Butler County Board of Commissioners
Phil Heimlich, Hamilton County Board of Commissioners
Pat Manger, Clermont County Engineer's Office
Todd Portune, Hamilton County Board of Commissioners
Bob Proud, Clermont County Board of Commissioners
Ken Rehtin, Campbell County Fiscal Court
Pat Arnold South, Warren County Board of Commissioners
Neil Tunison, Warren County Engineer's Office
Gregory Wilkens, Butler County Engineer's Office

***PERSONS RESPONSIBLE TO ELECTED OFFICIALS OR FROM
SPECIAL PURPOSE DISTRICTS***

Joseph Allen, Kenton County Airport Board
Nancy Ellwood, Mill Creek Watershed Council of Communities
Dennis Gordon, Northern Kentucky Area Planning Commission
Pamela E. Mullins, Cincinnati Public Schools

RESIDENTS

Ed Burdell, Citizens for Civic Renewal
Michael Fisher, Cincinnati USA Regional Chamber
Joyce Kinley, The Amos Project
Steven Love, African American Chamber of Commerce
Larry Maxey, Northern Kentucky Area Chamber of Commerce
Lynn Olman, President, Greater Cincinnati Hospital Council
Kenneth F. Reed
V. Anthony Simms-Howell, Ohio Commission on Hispanic/Latino Affairs

OKI LAND USE COMMISSION

(Entire Board serves – Mel Martin, Chairman)

INTERMODAL COORDINATING COMMITTEE

Timothy P. Gilday, Chairman

Andrew Aiello	Casey Grady	John Niehaus
Kenneth H. Bogard	Valerie Griffin	Emmanuel Nsonwu
John Braun	Jerry Haddix	Ralph Reigelsperger
Judith Carter	Robert Hans	Peggy D. Reis
Cory Chadwick	Allan Harris	Cheri Rekow
Kevin Costello	Ted Hubbard	Timothy J. Reynolds
John Creech	Helen Hunter	Mike Salamone
Kathryn Dale	Douglas Johnson	Kim Satzger
Ronald Davis	Michael F. Juengling	Mary Singler
Steve DeHart	James P. Jurgensen	Greg Sketch
Richard Dettmer	Martha Kelly	Craig Stephenson
Erin Donovan	Peter J. Klear	Amy Thomas
Annalee Duganier	Keith Logsdon	Greg Tulley
Bernadette Dupont	Rick Lunnemann	Reginald Victor
David J. Duritsch	William D. Martin	Joe Vogel
David Efland	David Mick	Carl (Doug) Walker
Louis M. Ethridge	Ron Miller	Robert Ware
Tom Ewing	Mark Mitter	Gregory J. Wilkens
John Fonner	Edward Moore	Jeff Wright
Adam Goetzman	Stephen Murphy	

CORRIDOR STUDY/SPECIAL PURPOSE COMMITTEE CHAIRS

ENVIRONMENTAL JUSTICE ADVISORY COMMITTEE – Allan Harris, Chair
GROUNDWATER COMMITTEE – Jim Fox and Dave Weihrauch, Co-Chairs
REGIONAL INCIDENT MANAGEMENT TASK FORCE – Richard Janke, Chair
UPTOWN TRANSPORTATION STUDY
WESTERN HAMILTON COUNTY CORRIDOR STUDY – Keith Corman, Chair

OKI ENVIRONMENTAL JUSTICE ADVISORY COMMITTEE

Allan C. Harris, Chairman

Rep. Catherine Barrett, Ohio District 31
JoAnna M. Brown, City of Cincinnati Department of Transportation & Engineering
Gina Douthat, TANK (Transit Authority of Northern Kentucky)
Gilberto Esparza, Hispanic Resource Center
Casey Grady, N KY Area Development District
Linda L. Huff, N KY Community Action Commission
Michael Hurysz, N KY Area Development District
Hans Jindal, Ohio Department of Transportation
Joyce Kinley, The AMOS Project
Lin Laing, Center for Independent Living Options
Gregory Mason, Cincinnati State Technical & Community College
Chris Monzel, Cincinnati City Council
Hon. Gary W. Moore, Boone County Fiscal Court
Hon. Steve Pendery, Campbell County Fiscal Court
Commissioner Todd Portune, Hamilton County Board of Commissioners
Vice Mayor Ken Reed, City of Trenton
Sharmili Sampath, N KY Area Planning Commission
Sue Schindler, The Inclusion Network
Maureen Sullivan, Urban Appalachian Council
Mayor Raymond Terrell, Village of Woodlawn
Greg Tulley, City of Newport Planning & Development
Barbara Wright, Hamilton County Community Development Department

PLANNING PRIORITIES

There are three key documents produced by the metropolitan planning process: the Unified Planning Work Program, The Regional Transportation Plan and the Transportation Improvement Program. These and other important activities are discussed below.

Unified Planning Work Program (UPWP) (Update Schedule: Yearly; Next Update: May, 2007)

This document, prepared annually by OKI in cooperation with local and state officials, transit agencies and others, documents all planning activities anticipated during the fiscal year regardless of funding sources, while incorporating the comprehensive intermodal planning process. This continuing planning process is responsive to the needs of the local area and to the changes occurring in the region for which current data concerning land use, travel, and transportation facilities must be continuously maintained.

OKI Regional Transportation Plan (RTP) (Update Schedule: every 3 years; Next Update: June, 2007)

The OKI Board of Trustees adopted the OKI 2030 Regional Transportation Plan on June 13, 2001 and subsequently amended it in September and November 2002. The triennial Plan update was adopted on June 10, 2004. The Plan serves as a blueprint for transportation projects in our region through the year 2030. It addresses future needs created by growth and development. At the same time, it responds to Safe Accountable Flexible Efficient Transportation Equity Act: A Legacy for Users (SAFETEA-LU) and Clean Air Act requirements that call for mitigating congestion, addressing air quality and other environmental, social and financial issues.

This Plan meets federal regulations in that it is constrained fiscally and with regard to mobile source emissions (air quality). An expanded section related to community impacts and environmental justice is included. As in the previous Plan, this Plan provides the framework for corridor studies and other initiatives.

Transportation Improvement Plan (TIP) (Update Schedule: every 2 years; Next Update: May 2007)

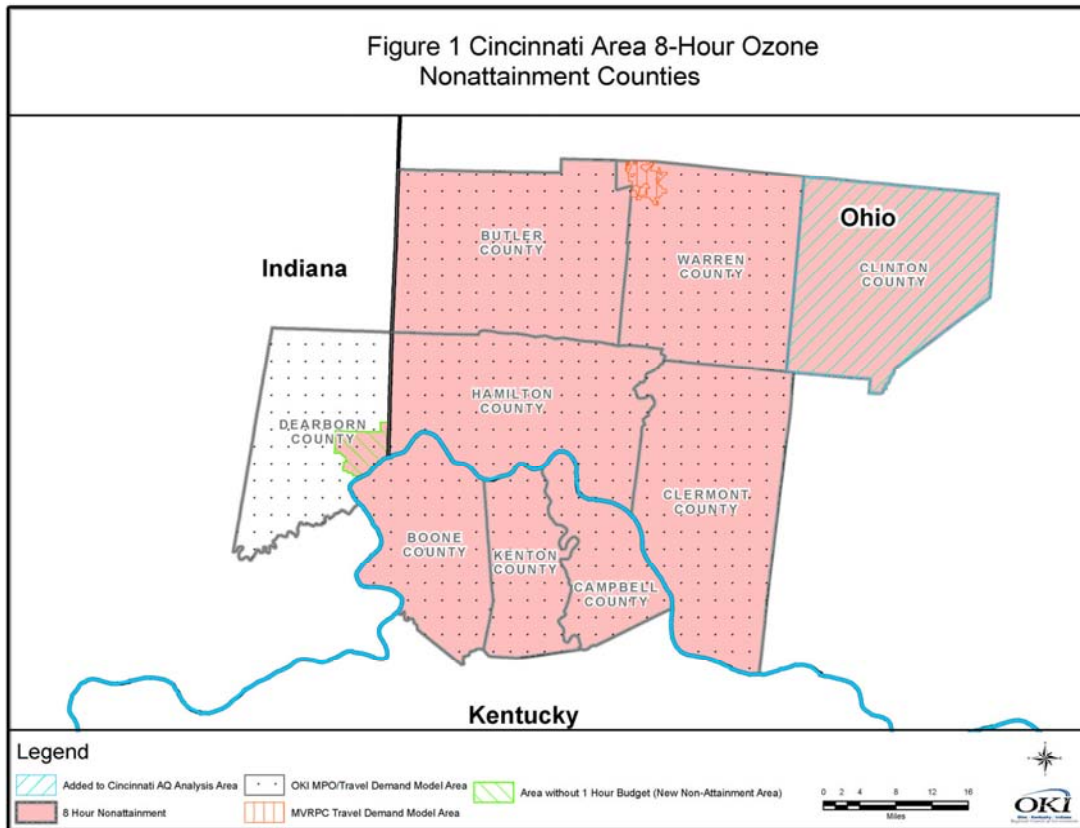
This document is developed every two years and reviewed periodically in cooperation with state and local officials, regional and local transit operators, and other affected transportation, regional planning and implementing agencies. The TIP consists of improvements recommended from the short-range planning process, elements of the long range plan, and the transit development programs of the various transit systems. Specifically, the TIP: 1) identifies transportation improvements recommended for advancement during the four year program period; 2) indicates the area's priorities; 3) groups improvements of similar urgency and anticipated staging into appropriate staging periods; 4) includes realistic estimates of total costs and revenues for the program period; and 5) is financially constrained. The entire TIP is tested to establish its conformity with the State Implementation Plan for air quality.

The TIP includes project-by-project listings which are modified periodically and contain: 1) sufficient descriptive material of work, termini, and length to identify the project; 2) estimated total cost and the amount of federal funds proposed to be obligated during the program year; 3) proposed source of federal and non-federal funds; and 4) identification of the recipient and state and local agencies responsible for carrying out the project.

Mobile Source Emissions Analysis

Pursuant to provisions of the CAAA of 1990, U.S. EPA designated a nine county area in the Cincinnati area as a basic nonattainment area for ozone under the eight-hour ozone standard in April 2004. In December 2004, U.S. EPA designated an eight county Cincinnati area as nonattainment under the annual fine particulate matter (PM2.5) standard. The Cincinnati ozone nonattainment area includes Lawrenceburg Township in Dearborn County Indiana, the Kentucky counties of Boone, Campbell and Kenton, and the Ohio counties of Butler, Clermont, Clinton, Hamilton and Warren (Figure 1). The PM2.5 nonattainment area is identical except for the exclusion of Clinton County. The OKI Regional Council of Governments, as the Metropolitan Planning Organization (MPO), consists of Dearborn, Boone, Campbell, Kenton, Butler, Clermont, Hamilton and Warren counties. *OKI's Regional Transportation Plan and Transportation Improvement Program* address the MPO area only. The cities of Franklin and Carlisle in Warren County are part of the Miami Valley Regional Planning Commission (MVRPC) planning area. Projects within this portion of Warren County are included in OKI's conformity analysis. Clinton County is outside of the OKI region, but is part of the nonattainment area. The Ohio Department of Transportation (ODOT) is the lead planning agency for Clinton County and prepares the emissions analysis for the Clinton County portion of the air quality conformity determination.

All states with nonattainment areas are required to revise their State Implementation Plans (SIPs) to demonstrate future compliance with the federal air quality standards. In 2004, OKI established a Clean Air Consortium of local business and government leaders to prioritize emission reduction strategies and provide these recommendations to the state air agencies. The Consortium recommendations for compliance with the ozone standard were completed in 2005. Strategies for attaining the PM2.5 standard will be developed and prioritized in 2006



Corridor Studies

OKI has been a leader both regionally and nationally in Corridor Studies. As of February 2005, ten corridor studies or Major Investment Studies (MIS) have been completed and five are ongoing. These studies, a major component of the Long Range Plan, permit detailed evaluation of problems and potential. In addition, OKI has overseen county transportation plans or studies for Boone, Campbell Kenton and Dearborn counties.

Transportation System Management (TSM)

The TSM element is included as part of the OKI Transportation Improvement Program. Inclusion of the TSM activities in the TIP and specific reference to both the TIP and TSM in one resolution of adoption are intended to be indicative of the close relationship between these two activities. In addition, TSM is addressed in OKI's transportation plan.

Congestion Management (CMS)

For the purpose of monitoring system performance, OKI has identified a regional Congestion Management Network. It includes the roadways for which data is collected for identifying congestion problems and needed improvements, and for assessing the effectiveness of implemented actions. The congestion management network includes about 1,600 road miles and carries nearly 75% of the total regional traffic.

Ongoing system monitoring is accomplished through various data acquisition techniques including: 1) data-base management of traffic count data performed by OKI and its partners; (2) travel time surveys on the congestion management network beginning with the NHS (this UPWP commits to year three of the second three year cycle); (3) real-time travel data from ARTIMIS; (4) acquisition of transit ridership data from transit operators; (5) transit operational data from transit operators; (6) periodic inventory of freight operations in the region; (7) periodic field review of the region's highway system attributes; (8) detailed travel data in ongoing transportation corridor study areas; and (9) a framework for evaluating the effects of system improvements.

Specialized Transportation

OKI is actively involved in the review of Specialized Transportation Program applications from private, nonprofit agencies in Butler, Clermont, Hamilton and Warren counties. Each year, the OKI Intermodal Coordinating Committee establishes a subcommittee which hears and scores oral presentations from qualified applicants.

Transit Planning Assistance

OKI has provided transit planning assistance to all federally-funded of public transit systems in the region: Southwest Ohio Regional Transit Authority (SORTA), Transit Authority of Northern Kentucky (TANK), the Middletown Transit System, Clermont Transportation Connection, and the Warren County Transit Service.

Transportation Enhancements (TE)

Beginning with ISTEA and continuing with TEA-21 and SAFETEA-LU, the Ohio Department of Transportation has annually allocated a portion of the state's Transportation Enhancement (TE) funding to the 16 Metropolitan Planning Organizations in Ohio for distribution within their respective counties. OKI awarded three million dollars in funding to 15 local applicants in May 2000. During 2002-03, the award

procedures were revised, and a second program cycle was initiated in early 2003. Since 2003, awards have been made on a project-by-project basis, as they advance to become eligible for funding. By the end of 2005, a total of 13 projects utilizing \$3.94 million in TE funding had been completed, five more (\$2.67 million) were let to construction, one (\$480,000) was scheduled for sale late in FY06, and five more (\$2.83 million) are programmed for FY07 and beyond.

Technical Services

OKI has for many years allocated a portion of its resources to the provision of technical assistance to units of local government in the areas of transportation planning, traffic engineering, and process consultation. While this does not constitute a major element of the agency's overall mission, it is a service which is greatly appreciated by local governments, many of which do not have either the staffing or the financial resources to have access to these types of services on their own. Specifically, OKI has provided technical services and acted in an umbrella capacity for three multi-jurisdictional trail system development efforts in recent years.

RideShare

OKI's RideShare service has been operational for thirty years. RideShare is a voluntary, employer-oriented activity to increase vehicle occupancy, decrease miles of travel, and improve air quality. A full-time staff is devoted to promoting and operating RideShare. The strategies utilized include direct marketing to major employers, their employees, the general public, and community groups. Promotional tools include freeway and arterial signing bearing the 241-RIDE telephone number, brochures, posters, calendars, radio advertising including drive time reports, and bus signs.

General Coordination Efforts between OKI, STATE DOTs, FHWA, FTA, RTAs

OKI has worked closely with the ODOT, KYTC, INDOT, Federal Highway Administration (FHWA), Federal Transit Administration (FTA), Environmental Protection Agency (EPA), SORTA, TANK, Middletown Transit Service, Clermont Transportation Connection, and Warren County Transit in developing the multimodal approach to planning for the region. These agencies provide data, technical assistance and participate actively in the region's planning process. OKI is grateful for their assistance.

FY 2007 Unified Planning Work Program Highlights

- 1) **601 Short Range Planning:** Assistance to local jurisdictions in development of pedestrian and bike planning activities including Safe Routes to School programs, access management plans and the continuation of an active transportation enhancement (TE) program.
- 2) **602 Transportation Improvement Program:** The FY 2008 – 2011 TIP will be prepared according to ODOT’s outline and timeline. Work will begin to make the electronic version of the TIP shown on the OKI website interactive.
- 3) **605 Surveillance:** GIS system is functional, additional data being acquired and developed. Continued refinement of travel model techniques and procedures. Census Transportation Planning Package commuting data will be incorporated into the model. Conversion of the model to Cube/Voyager will be completed. Traffic simulation for portions of Uptown will be developed. Traffic count data will be collected and processed. Visualization techniques required in SAFETEA-LU will be further developed.
- 4) **610 Long Range Planning:** Continue an aggressive congestion management (CMS) program. The OKI planning processes and Plan will be reviewed for SAFETEA-LU compliance. The Land Use Commission will continue its work to implement a voluntary strategic regional policy plan for growth and development.
- 5) **625.2 Transportation Services-Public Involvement Planning:** Update the public involvement process as necessary to incorporate the new and revised SAFETEA-LU regulations related to environmental justice (EJ) and Title VI.
- 6) **665.4 – Regional Ozone Reduction Program:** The program will conduct education and outreach activities aimed at protecting public health and the local economy while working towards the attainment of the national ozone and particulate matter standards.
- 7) **667.1 – Commuter Assistance Services: RideShare:** Continue to provide transportation alternatives to commuters within the Tri-State area, thereby providing energy conservation, traffic and pollution reduction and preserving the quality of life in the OKI region.
- 8) **684.5 – Uptown Transportation Study:** The study which was initiated in late 2004 will be completed. This study will develop a comprehensive transportation plan for improving connectivity, accessibility, transit and parking in the Uptown area.
- 9) **684.9 – Western Corridor Study:** The major investment study of Western Hamilton Co. will be completed.
- 10) **685.1 – Indiana Exclusive: Dearborn County Transportation Planning:** The object of this work element is to implement elements of the 3C planning process for Dearborn County.
- 11) **685.2 – Indiana Exclusive: Dearborn County Transportation Planning:** This work element will supplement the activities listed in 685.1 and 685.3 as necessary.
- 12) **685.3 - Indiana Exclusive: US 50 Corridor Study:** Involves finding solutions to the chronic traffic congestion on segments of US 50 that retain the vitality of the current businesses in the corridor and enhance economic development opportunities. Study will be completed in FY2007.
- 13) **686.1 – Kentucky Exclusive – I-471 Corridor Study:** Complete a study to identify transportation solutions for the I-471 corridor from the Ohio River to Cold Spring.

- 14) **686.3 - Kentucky Exclusive – Safety and Operations Studies:** Hands Pike in Kenton County will be the first study. Others will follow depending on resources and needs of KYTC-D6.
- 15) **710.1 – Local Water Quality Activities:** Provide technical support for local agencies as time and resources permit.
- 16) **710.2 - Great Miami Drinking Water Protection Project:** Nine project partners will help OKI improve drinking water source protection in the lower Great Miami River watershed.
- 17) **710.3 Mill Creek Headwaters Project:** A dozen project partners will help OKI implement programs that stabilize stream banks and restore floodplains.
- 18) **710.4 - Great Miami Water Runoff Reduction Project:** OKI and project partners will complete construction of the pervious parking spaces and rain gardens in a new park in the Big Bend of the Great Miami River in Colerain Township, Hamilton County.
- 19) **710.6 - Water Quality Program:** As the federally-designated regional water quality planning agency, OKI will continue to refine the base information and recommendations in the Regional Water Quality Management Plan. As part of those activities, OKI is heightening awareness of water quality issues through public education, and its involvement in groundwater projects and watershed initiatives.
- 20) **720.1 – Mobile Source Emissions Planning:** Major activities will be conformity analysis for transportation planning and coordination with state and federal agencies regarding impacts of the 8-hour standard and PM 2.5.
- 21) **800.1 – Regional Planning Activities:** Key items of focus are green space conservation and an analysis of economic development trends and issues.

Work Program



601 - SHORT-RANGE PLANNING

Objectives

To address short-term problems and needs relating to transportation of persons and goods in the OKI region, and to identify actions, including Transportation System Management (TSM) and Transportation Demand Management (TDM) measures, that present a systematic approach to solving these problems. Included are additional detailing and analysis of specific long-range plan elements for project design and implementation; necessary planning to develop low capital projects with short implementation times that may not specifically be part of the long range plan; and evaluation of measures to improve the efficiency, effectiveness and multi-modality of the existing transportation system. Also included under this objective is assistance to local governments regarding compliance with the provisions of the Manual on Uniform Traffic Control Devices (MUTCD), and other guidelines, standards and regulations, and technical support of multi-jurisdictional transportation system implementation efforts.

To coordinate with units of local government regarding the development and adoption of land use plans, thoroughfare plans, zoning ordinances, subdivision regulations, and other governmental controls addressing the relationship between land use planning and transportation planning. The purposes of such communication will be to maintain consistency between regional and local planning activities, and to encourage the recognition and integration into local plans of significant regional goals and objectives relating to promotion of transit and other high occupancy vehicles, bicycle and pedestrian facilities, right-of-way preservation, access management, and growth management.

To utilize the transportation planning expertise and resources of the OKI Technical Services staff in providing data, technical assistance and planning services to those responsible, within the public and private sectors, for community development and implementation programs. A major part of this element will be the development and implementation of transportation enhancement projects in the four Ohio counties.

To provide interaction between OKI staff and community planning or citizen organizations, relative to area wide or sub-area level transportation matters.

To provide, through workshop and conference sponsorships, training and support to public and private non-profit agencies to enhance and improve transportation capabilities and resources.

To create a database of counts for bicyclists and pedestrians to be used for local planning and to contribute to the Institute of Transportation Engineers (ITE) National Bicycle and Pedestrian Documentation Project.

To update the OKI Regional Bicycle Plan document and the corresponding portion of the 2030 Long Range Plan. To address comments related to the bicycle plan provided through the last FHWA certification process. To accommodate review and planning for bicycle travel.

Products

- 1) Documentation supporting traffic operations improvement recommendations on problem intersections and roadway segments, or relating to analyses and recommendations involving other travel modes or conditions. (as appropriate)
- 2) Assistance to local governments in the development and implementation of access management plans and programs. (as appropriate)

- 3) Oversight of local and multi-jurisdictional bicycle/pedestrian plan development and implementation. Includes guidance of work on feasibility studies and analyses, such as the Ohio River Trail, the Miami 2 Miami system, and the Williamsburg to Batavia Hike/Bike Trail. Also includes assessment of funding opportunities and constraints for bicycle and pedestrian facilities, and inclusion of appropriate bike/ped treatments in projects added to the TIP. A traffic count database for selected locations of cyclist and pedestrian travel. Access to the national ITE database compiled from local and other participating sites. An updated Regional Bicycle Plan, consistent with federal guidance, with an inventory of locally current and planned facilities, information to assist local governments with their bicycle planning programs and recommendations for appropriate bicycle facility components for existing and proposed federally funded highway projects. (6/07)
- 4) Administration of OKI's Urban Area Transportation Enhancement Program, including applicants' workshops and implementation support. (6/07)
- 5) Assistance to local governments and advocacy organizations in developing Safe Routes to School programs (as appropriate).
- 6) A transportation planning/traffic engineering seminar, a safe routes to school workshop for local agencies, distribution of bicycle and pedestrian related maps, planning and safety information. (6/07)
- 7) Documentation of Scenic Byways Program activities. (as appropriate)
- 8) Public involvement process assistance and other technical assistance to units of local government and their project committees relative to the implementation of their transportation plans and programs, and their related land use development and monitoring activities. This can also include such activities as providing technical assistance to the Cincinnati Bike/PAC, the Great Miami Bikeway Committee, the Fairfax-Mariemont Loop Trail Committee, and the West Fork Mill Creek Greenways Advisory Committee. (as appropriate)
- 9) Miscellaneous data products, census materials, and information dissemination provided to citizens and public and private organizations. Distribution of the new OKI public brochure describing popular bicycling facilities in the region, and OKI mapping and safety products. (6/07)
- 10) Transit planning assistance to any of the transit systems in the OKI Region consistent with identified needs, including Human Services Transportation Coordination as required under SAFETEA-LU. (as appropriate)
- 11) Evaluated Specialized Transportation Program applications, and annual inspections of vehicles sponsored by the program. (12/07)

602 - TRANSPORTATION IMPROVEMENT PROGRAM

Objective

To develop an effective, staged multi-year program that identifies and prioritizes transportation improvements. Projects are to be consistent with transportation plans and studies emanating from the urban transportation planning process, and the program is fiscally and air quality constrained.

Products

- 1) A two-year TIP, including highway and transit programs, covering a four-year period, will be prepared in FY07. The TIP will be fully compliant with all SAFETEA-LU requirements, including expanded scope, consultation, mitigation and participation requirements. Draft and final documents will be prepared and provided to ODOT, KYTC and INDOT for inclusion in the respective STIP's. OKI will host two workshops

for local agencies to assist with the preparation of applications for OKI-allocated federal funds--one for projects located in Ohio and seeking federal STP and CMAQ funds and one for projects in Kentucky seeking federal SNK funds. Adoption of the FY 2008 – 2011 TIP 4/07.

- 2) To monitor and expedite projects in Ohio using STP, TEA and CMAQ federal funds; in Kentucky using SNK federal funds; and, in Indiana using STP and CMAQ federal funds sub-allocated to OKI with the state departments of transportation and local sponsors; and, to work with ODOT District 8 to lock-down projects for fiscal year 2008.
- 3) TIP amendments (as necessary).
- 4) Interactive online TIP that allows users to search the TIP database, print reports and view TIP maps. (6/07)
- 5) Regional prioritization of TRAC applicant projects. (9/06)

605 - SURVEILLANCE

Objectives

One of the objectives is to develop and maintain, on the appropriate update cycle, the basic data essential to transportation planning activities. Such a database represents current conditions within the region and permits comparison to previous as well as forecast periods to determine the impact of changing development and travel patterns on the planning process. Types of data to be maintained include trends in demographic and land use activity; the transportation system level of service and utilization; impacts on the natural resource base, including air quality and energy; and travel data. Another objective is to maintain the validity and operation of a travel demand model.

The travel demand model should be able to simulate the current trip making behavior and travel patterns. The travel demand model should be able to assess the impacts of proposed changes in land uses, transportation system, travel demand management strategies, and transportation control measures. The majority of the basic data now resides in GIS format, therefore maintaining existing datasets and building new GIS datasets to support the above-mentioned transportation planning activities is a vital part of this work plan.

Products

- 1) Updated transportation system characteristics data files. (6/07)
- 2) An updated/refined/enhanced and operational travel demand/air quality model. (6/07)
- 3) Revised milestone year zonal socioeconomic files for 2000, 2010, 2020 and 2030, as needed.
- 4) OKI will provide traffic simulation products in support of corridor studies as needed.
- 5) Services to Census Bureau and processing of data requests from local government and citizens. (as appropriate)
- 6) Updated geographic databases. (on-going)
- 7) Up-to-date GIS software. (6/07)
- 8) New environmental spatial databases. (as appropriate)
- 9) Streamlined internal workflow for presenting Travel Demand Model data. (6/07)
- 10) Enhanced 3-D visualization presentations and techniques. (6/07)

605.3 Supplemental Surveillance Combined (FY 2006 OH CPG & FY2007 KY PL)

Regional Travel Model Conversion

Background

OKI has decided moved the platform of the regional travel model from TRANPLAN to the CUBE/Voyager environment. The move allows for the use of state of art travel forecasting techniques and integration with the OKI GIS. The CUBE environment has special scripting language. In or to use special programs and functions of the existing model, certain conversions and creation of scripts are required.

Product

Updated Regional Travel Model that runs in CUBE/Voyager (completed 9/30/06)

Traffic Volume Data Collection

Background

OKI, as the Metropolitan Planning Organization (MPO) for the Cincinnati-Northern Kentucky metropolitan area, is responsible for regional transportation planning. Traffic count data is a key element in the analysis of existing conditions and the validation of OKI's Travel Model. Count data is also required for corridor studies and engineering analyses. OKI is in need of current traffic count data at key locations.

Product

Updated traffic count database. (completed 9/30/2006)

610 – LONG RANGE PLANNING

Objectives

To update and refine the adopted regional transportation plan and carry out its recommendations to 1) provide consistency with the requirements of the Safe Accountable Flexible Efficient Transportation Equity Act: A Legacy for Users (SAFETEA-LU) Metropolitan Planning Regulations and the Clean Air Act Amendments (CAAA) of 1990, 2) maintain a 20-year planning horizon, 3) further integrate a congestion management system into transportation planning and operations, 4) provide traffic projections and other plan information required by implementing agencies, 5) convene the necessary regional bodies to further ITS goals of the region through ARTIMIS, and 6) assist agencies in the analysis of transportation safety issues.

To provide fair treatment and meaningful involvement of all people, regardless of race, color, national origin or income, with respect to the use of public-source transportation funding.

To identify linkages between land use and development and transportation policy and identify the fundamental impact of the transportation system on land use activity.

To implement a strategic regional policy plan which will guide communities' preferred development patterns and transportation system to fulfill desired future conditions. This policy plan was produced by the OKI Board of Trustees sitting as the Land Use Commission.

To support land use patterns that would promote multimodal travel alternatives and reduced trips, enhanced air quality and the efficient movement of people and good (freight).

To assist local governments in drafting standards and criteria which recognize the relationship between land use, transportation, air quality and other infrastructure.

To provide project management resources for various transportation studies as identified in this work program.

Identify and engage stakeholders in all aspects of transportation planning activities.

To develop technologies that advance local governments and the public's ability to understand the impacts of proposed improvements through visualization techniques.

To provide project level traffic forecasts and turning movements.

610.1 - Long Range Planning: SYSTEM MANAGEMENT

Products

- 1) Travel time surveys in FY 2007 will focus on the non-interstate portion of the Congestion Management System network within Butler, western Hamilton, Dearborn and Kentucky (group 3). (1/07). A comprehensive review of the performance changes of facilities with Cycle 1 and Cycle 2 data. (05/07)
- 2) Coordination with ODOT, KYTC, INDOT, local governments and major transit agencies on options for improving the management and operation of the existing system. (ongoing)
- 3) *OKI 2030 Regional Transportation Plan* amendments (as appropriate)
- 4) Benefit/cost analysis of proposed transportation improvements (as appropriate)
- 5) Participation in regional, state and national forums on transportation planning issues. Participation in interagency consultation activities. Self certification of transportation planning activities by the OKI Board of Trustees. (5/07) FY 2008 UPWP (6/07)
- 6) Project development activities for future corridor or special studies as identified.
- 7) Support the efforts of the Regional Incident Management Task Force as needed. Review and initiate a process to update the Regional ITS Architecture as necessary.
- 8) Review and reappraisal of safety elements leading to a fully integrated element of the overall transportation planning process. Updated crash data as needed (6/07). Locate high crash concentrations and segments as needed (6/07). Performance of a limited number of safety studies for ODOT and other agencies as requested. (6/07). Cooperation with ODOT, KYTC and INDOT in the development of their SHSP as needed. Host an ODOT Safety Conscious Planning Workshop intended to address initial needs of the SHSP for Ohio (6/07).
- 9) Review and reappraisal of security elements leading to a fully integrated element of the overall transportation planning process.
- 10) OKI will maintain current Project Identification Forms (PIFs) for all Kentucky projects recommended in OKI's Transportation Plan. PIFs will be maintained and revised per guidelines established by KYTC. OKI will maintain and revise the Unscheduled Projects List (UPL), for Kentucky projects identified thru OKI's planning process.
- 11) Project level traffic forecasts and turning movements as requested utilizing the regional travel model and other software as appropriate.
- 12) Technical memorandum, gap analysis and resolution certifying the agency's compliance with SAFETEA-LU planning regulations (4/07)

610.2: SAFETY WORKSHOP - Ohio

Product

- 1) Safety Workshop. (6/07)

610.4 – Long Range Planning: LAND USE

Products

- 1) Documentation of presentations and consultations about the land use/transportation relationship and materials distributed through professional organizations. (6/07)
- 2) Documentation of local comprehensive plan guidance, collateral materials and technical assistance. (as appropriate)
- 3) Documentation of any feasible fiscal impact and environmental resource valuation models that can be adapted or modified for local government use in the OKI region. (6/07)

625.5 Transportation Services: PUBLIC INVOLVEMENT PLANNING

Objective

To incorporate a strenuous public involvement process and consider Title VI issues, including environmental justice (EJ), as major components of the transportation goals of OKI. OKI will continue to apply traditional methodologies and explore new ones for consideration to incorporate into the fair treatment and meaningful involvement of all people regardless of race, color, national origin, or income with respect to the development, implementation, and enforcement of environmental justice laws, regulations, and policies in all transportation planning processes.

Products:

- 1) Public Involvement Plans for major OKI studies and projects. (i.e. Uptown Transportation Study, Western Corridor Study, and the I-471 Corridor Study).
- 2) Perform an annual program compliance review.
- 3) Apply the information in the maps coordinating the location of all transportation projects in relation to environmental justice and Title VI communities so that the EJAC can effectively determine if proper consideration is being made to underserved communities. Provide input to the TIP and Long-Range Plan updates as needed.
- 4) Review and modify as needed the EJ/Title VI component of the project prioritization scoring process.
- 5) Title VI Complaint Process for OKI studies and projects.
- 6) SAFETEA-LU compliant Public Participation Plan.

665.4 Special Studies: REGIONAL OZONE REDUCTION PROGRAM

Objective

To continue the Regional Ozone Reduction Program designed to raise public and business awareness therefore reducing pollution levels in order to protect public health, the local economy and attain the national ozone and particulate matter standards.

Products

- 1) An outreach program geared toward the reduction of pollutants in the eight county urban airshed.
- 2) A finalized list of emission reduction strategies addressing the PM 2.5 standards for inclusion in the SIP.

667.1 Commuter Assistance Services: RideShare

Objective

To provide transportation alternatives to commuter within the Tri-state area; thereby promoting energy conservation, reducing traffic and pollution, saving money and helping to preserve the quality of life for those who live in the OKI region

Products

- 1) A detailed report of database activities such as additions, deletions, counts of applicants provided with matchlist, evaluation of marketing activities based on how registrants heard about RideShare and the current database size.
- 2) Retain existing vanpools through rider recruitment and form new vanpools to reduce single-occupant vehicles from Tri-state roads.
- 3) An accurate GRH database and an efficient reimbursement program.
- 4) Execution of an annual marketing plan outlining the most effective approaches to increase awareness and participation in all aspects of the OKI RideShare program.

674.1 – Mass Transit Exclusive: SORTA Planning Studies

Objective

The Southwest Ohio Regional Transit Authority's (SORTA) mission is to provide cost-effective, efficient, quality mass transit services within available resources to enable people to access their chosen activities in our community.

Products

- 1) Uptown Planning Initiatives – Continuation of planning activities initiated as part of the Uptown Transportation Study including refinement of transit hub, improved operating speeds on existing routes, and related transit improvements; continuation of the development and analysis of programs and initiatives in coordination of the University of Cincinnati, including potential free ride program and other services (OKI study, completion 2006);

- 2) Western Hills Transit Hub Project – Site assessment and development of a transit hub to serve as the termination/layover/transfer point for nine Metro routes on the west side of the service area;
- 3) Mini-Hub Program – Conceptual and final design development and location assessment of a mini-hub passenger waiting facilities;
- 4) Layover Site Assessment – Continuation of assessment of requirements for the design and development of Metro layovers in Amelia, West Chester and other locations in the Metro service area. Each site assessment will consider design and cost estimates for possible route modifications;
- 5) Eastern Corridor Study – An assessment of commuter travel patterns to, from and within the eastern corridor of the region and how best to reduce congestion and enhance economic development, inclusive of transit alternatives (Hamilton County TID, completion n/a)

674.2 Mass Transit Exclusive: TANK Planning Studies

Objectives

TANK planning will focus on three objectives in fiscal year 2007. The first is to begin the implementation of the Transit Network Study, TANK's long range plan that was completed at the end of FY 2006. This will involve project development planning and continued coordination with TANK's regional planning partners. Secondly, TANK will create a Technology Plan. This plan will ensure the successful long-term integration and performance of TANK's existing and future applications. Lastly, TANK will continue to administer ongoing planning practices such as the Substandard Route Review, Service Request Process, and the development of TANK GIS data.

Products

- 1) Implementation of the first phase of the TNS short-term service recommendations
- 2) Updated Substandard Route Review and Service Request Information
- 3) New GIS/GPS applications to improve TANK service delivery/analysis
- 4) TANK Technology Plan recommendations and implementation schedule

674.3 Mass Transit Exclusive: MIDDLETOWN TRANSIT PLANNING STUDIES

Objective

Perform the outlined planning activities so that the collected data and updated procedural plans results in a guide for MTS's direction over the next few years.

Products

- 1) Passenger mileage survey for fixed route and paratransit service.
- 2) MTS operating plan
- 3) Operational indicators for benchmarking, MTS performance management system and reports to funding agencies.

674.4 Mass Transit Exclusive: CLERMONT TRANSPORTATION CONNECTION

Objective

The implementation of the current items as outlined in the 2007 Plan of Work. These items include completion of the Clermont County Public Transportation Coordination Study, and maintaining a full staff of vehicle operators. Maintain an effective preventive maintenance program and replacement schedule for fleet vehicles. Continue monthly safety meetings with drivers. Regular and current updates of the Clermont Transportation Connection website.

Products

- 1) A report on the coordination study will be made available for review by OKI and ODOT. This report will determine the feasibility of combining transportation services in Clermont County to make the transportation services more efficient and cost effective.
- 2) Reduction in accidents through defensive driving.
- 3) Implement a current, easy to use informational format for the citizens of Clermont County to use.

684.6 – Ohio Exclusive: UPTOWN TRANSPORTATION STUDY

Objective

To complete a Major Investment Study of the Uptown Corridor.

Product

Final Corridor Study Report. (12/06)

684.9 – Ohio Exclusive: WESTERN CORRIDOR STUDY

Objective

To complete a Major Investment Study of Western Hamilton County, Ohio.

Products

- 1) Develop cost estimates and evaluate conceptual alternative solutions (08/06)
- 2) Finalize Purpose and Need Statement (10/06)
- 3) Prepare Strategic Plan (12/06)

684.X – Ohio Exclusive: I-71/Fields-Ertel Interchange Study

Objective

The Warren County Engineer will develop feasible alternatives for short term, intermediate term and long term projects that will provide the basis for an Interchange Modification Study (IMS) for each or in combination. OKI is funding \$320,000 of the \$400,000 using OKI sub-allocated federal Surface Transportation Program (STP) funds with \$80,000 in local match. The Warren County Engineer will sign an LPA agreement with ODOT for this study.

Products

Feasible alternatives report for short term, intermediate term and long term projects that will provide the basis for an Interchange Modification Study (IMS). The study will be conducted by the Warren County Engineer's Office.

685.1 Indiana Exclusive: DEARBORN COUNTY TRANSPORTATION PLANNING (CPG)

Objective

The objective of this work element is to implement elements of the 3C planning process for Dearborn County.

Products

- 1) Provide for Air Quality Conformity determinations for Lawrenceburg Township (as necessary)
- 2) Incorporate Dearborn County projects in the OKI TIP (as necessary)
- 3) Incorporate Dearborn County into the OKI UPWP (4/07)
- 4) Participate in the Indiana MPO Council (ongoing)
- 5) Maintain the Dearborn County Component of the OKI 2030 Regional Transportation Plan (6/07)
- 6) Participate with INDOT on the PDP. (on-going)
- 7) Participation in functional class designation and HPMS efforts. (as requested)

685.2 Indiana Exclusive: DEARBORN COUNTY TRANSPORTATION PLANNING (STP)

Objective

The objective of this work element is to implement elements of the 3C planning process for Dearborn County. This element will supplement the activities listed in 685.1 and 685.3 as necessary.

Products

- 1) Provide for Air Quality Conformity determinations for Lawrenceburg Township (as necessary)
- 2) Incorporate Dearborn County projects in the OKI TIP (as necessary)
- 3) Incorporate Dearborn County into the OKI UPWP (4/07)

- 4) Participate in the Indiana MPO Council (ongoing)
- 5) Maintain the Dearborn County Component of the OKI 2030 Regional Transportation Plan (6/07)
- 6) Participate with INDOT on the PDP. (on-going)
- 7) Participation in functional class designation and HPMS efforts. (as requested)
- 8) Participation in planning activities to advance specific proposed improvements including the Belleview Road project and US-50 study conducted by INDOT.

685.3 – Indiana Exclusive: US 50 CORRIDOR STUDY

Objective

The Objectives of this work element are: to manage *The Southeastern Indiana Gateway: US 50 Transportation and Land Use Plan*; to find solutions to the chronic traffic congestion on segments of US 50 that retain the vitality of the current businesses in the corridor and enhance economic development opportunities of local communities and the greater southeastern Indiana region; to develop a plan for land use, access management, and street layout for the US 50 corridor in Dearborn County, focusing on the ±5 mile segment between State Road 1 and State Road 350, that addresses safety and overall efficiency of the corridor; and to coordinate transportation improvements proposed by INDOT’s “Environmental Assessment” study with a land use plan to maximize the economic potential of the US 50 corridor -- guiding those transportation improvements and land development investments over the next 25 years.

Product

Final Report (11/06)

686.1 – Kentucky Exclusive: I-471 CORRIDOR STUDY

Objective

To conduct a transportation study to develop, evaluate and prioritize possible improvements to what is identified as the I-471 Corridor (formerly known as the Southeast Corridor). The proposed study area is located in Campbell County and is generally defined as the I-471 corridor from the Ohio River to Northern Kentucky University (NKU). Also included in the study area is KY-8 from I-471 on the east to the Taylor Southgate Bridge on the west and US-27 in the vicinity of NKU.

Products

- 1) A strategic plan that identifies and prioritizes possible improvements to facilitate efficient and safe flow of traffic in the I-471 corridor and the KY-8 corridor from I-471 to the Taylor Southgate Bridge. The study will include an operational and safety analysis of all I-471 interchanges in the corridor. Short term and long term improvements will be identified for each, including signal timing improvements in the area of influence of the interchange and potential design improvements. Candidate interchanges where modification may be the most feasible option will be advanced to Phase II of the study.
- 2) A list of proposed ITS improvements that will allow I-471/KY-8 to continue to run smoothly even with continued growth and development in the corridor. This list will also take into consideration associated arterials and will include possible use of message boards and synchronization of signals along KY-8.

- 3) Estimated emissions reductions based on a recommended strategic plan.
- 4) Estimated costs.
- 5) Final Corridor Study Report. (12/07)

686.3 – Kentucky Exclusive: Safety & Operational Studies

Objective

This project will identify alternatives for improving operations and safety for locations as determined by interagency consultation between OKI and KYTC including Hands Pike (KY-1501) in Kenton County in order to address traffic flow and safety problems.

Product

Prepare a plan that outlines potential solutions that address safety and operational needs. (6/07).

710.1 - LOCAL WATER QUALITY ACTIVITIES

Objective

To undertake water quality planning activities in Ohio, Kentucky and Indiana, as appropriate and as resources permit.

Products

- 1) Collateral materials for Ohio, Northern Kentucky, and Dearborn County watershed management activities, which may include education and outreach materials, fact sheets, and articles in stakeholder newsletters. (as appropriate)
- 2) Meeting notices, agendas, summaries, and related correspondence. (as appropriate)
- 3) Updated base information and recommendations for the OKI Regional Water Quality Management Plan. (as appropriate)

710.2 - GREAT MIAMI DRINKING WATER PROTECTION PROJECT

Methodologies

OKI received a \$69,000 planning category grant from the U.S. EPA under Section 319 of the federal Clean Water Act. Nine project partners will help OKI improve drinking water source protection in the lower Great Miami River watershed.

- 1) Formulate plans and draft ordinances improve drinking water source protection in the lower Great Miami River watershed.
- 2) Compile data and build public support for improved drinking water source protection in the lower Great Miami River watershed.

Products

- 1) Documentation of a drinking water source protection plan, a plan to enhance the Groundwater Consortium's protection program, and a draft ordinance for the Village of New Miami (3/07)
- 2) Install two monitoring wells in New Miami's drinking water protection area; documentation of inventories, maps and reports of potential sources of water pollution along the Great Miami River and major tributaries between New Miami and Colerain Township; educational materials and events (3/07)

710.3 - MILL CREEK HEADWATERS PROJECT

Methodologies

OKI received a \$498,010 implementation category grant from the U.S. EPA under Section 319 of the federal Clean Water Act. A dozen project partners will help OKI implement recommendations in both the Mill Creek Total Maximum Daily Load (TMDL) Report and the Upper Mill Creek Watershed Action Plan.

- 1) Reduce nonpoint-source pollution from nutrient loadings, organic enrichment and habitat alteration along the upper Mill Creek and East Fork Mill Creek in West Chester Township
- 2) Establish an education and activities program for property owners, homeowners associations and agricultural landowners about ways to reduce water pollution
- 3) Establish a monitoring program at five or more sites to evaluate the effectiveness of implementing selected best management practices

Products

- 1) At least 4,000 feet of stabilized stream bank; at least 2,000 feet of restored riparian corridor; at least 5 acres of restored floodplain with wetland enhancements (6/07)
- 2) Educational brochure, CD, videotape, and website/newsletter articles; Educational events: field day tours, and stream cleanups (12/07)
- 3) Quality Assurance Project Plan and a monitoring report (9/08)

710.4 - GREAT MIAMI RUNOFF REDUCTION PROJECT

Methodologies

OKI received a \$65,000 grant from the Miami Conservancy District (MCD) for two activities that aim to protect the Great Miami River. The project, called the Great Miami Runoff Reduction Project, focuses on two systems: "rain gardens" and pervious parking spaces. (Rain gardens receive storm water which is absorbed into the gardens' soil and by the gardens' native plants and vegetation.)

- 1) OKI and project partners will design and construct pervious parking spaces and rain gardens in a new park in the Big Bend of the Great Miami River in Colerain Township, Hamilton County.

Products

- 1) Pervious parking spaces and rain gardens in a new park in Colerain Township, Hamilton County. (4/07)

710.6 - WATER QUALITY PROGRAM

Objective

To assess, manage, and protect surface water and groundwater resources in view of regional growth and development and the resultant increased demand.

Products

- 1) Water quality public awareness outreach activities. (as appropriate)
- 2) For OEPA, specific products as negotiated in CY06.
- 3) Other Products in response to regional needs and appropriate funding sources. (as appropriate)

720.1 – MOBILE SOURCE EMISSIONS PLANNING

Objective

To ensure that OKI's Transportation Plan and Program contribute to the region's attainment and maintenance of national air quality standards.

Products

- 1) Ongoing coordination and consultation with OKI's Executive Committee and Intermodal Coordinating Committees and with federal, state and local agencies regarding air quality issues, including conformity analysis, documentation of Plan and TIP updates and amendments. Staff will provide travel and mobile source emission data to support SIP revisions prompted by changes in local emission control programs and federal standards for ozone and particulate matter (8-hr & PM2.5).
- 2) Quantification of the air quality and energy benefits of candidate projects for STP or CMAQ funding as required.

800.1 - REGIONAL PLANNING ACTIVITIES

Objective

To provide for sustainable development through planning services, data resources, and other information useful to the government, business, and civic sectors.

Products

- 1) Provision of various products and information.
- 2) Analyses of national and regional land development trends, conditions, and issues; and technical assistance on issues including land use, zoning, economic development, housing, water and sewer infrastructure, intergovernmental coordination, capital budgeting, and natural systems. (Ongoing)
- 3) Documentation of progress made by the regional greenspace office. (As appropriate)

Budget



