

OKI FY 2008

UNIFIED PLANNING WORK PROGRAM

Executive Summary



720 East Pete Rose Way, Suite 420
Cincinnati, Ohio 45202

www.oki.org

Phone: (513) 621-6300

Fax: (513) 631-9325

TTY: (513) 621-6300

April 11, 2006

INTRODUCTION

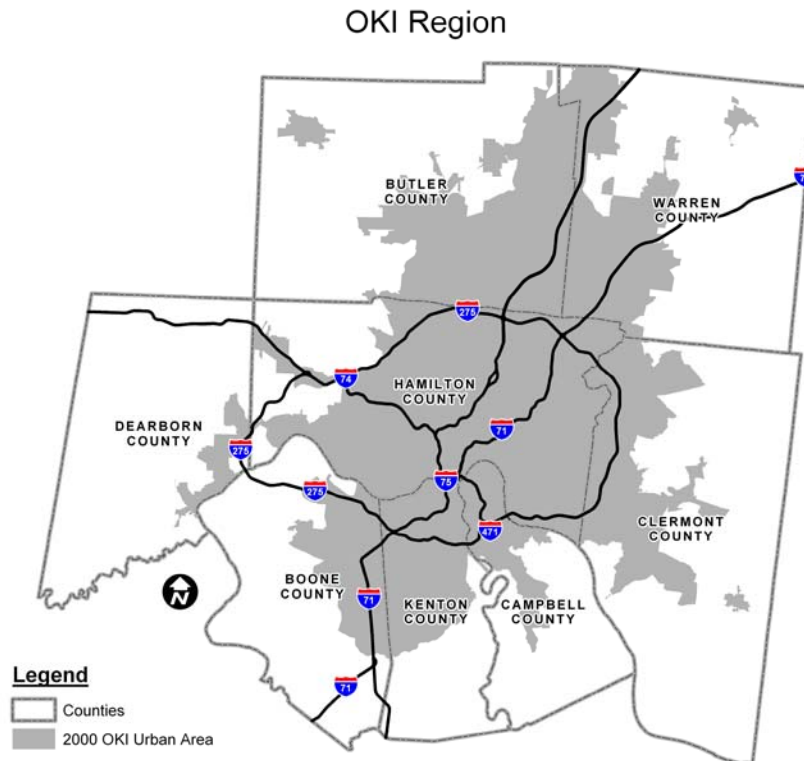
INTRODUCTION

The Fiscal Year 2008 Unified Planning Work Program (UPWP) outlines the scope of work to be undertaken by OKI for the period beginning July 1, 2007 and ending June 30, 2008. This document illustrates the relationship between adopted goals, objectives and program activities. It outlines the general nature of these program elements, which are summarized by general categories, and are referenced to specific projects by project number. Funding for development of this document is spread among the various programs included. Also included in this document is the agency prospectus which provides the framework for the remainder of the document and consolidates key interagency agreements according to OKI by-laws.

Primarily a management tool for planning and coordination, the UPWP provides the basis for cataloging and integrating OKI's activities into general categories. It delineates the programmatic and fiscal relationships essential for internal planning and programming.

STUDY AREA

The OKI region embraces an area of 2,636 square miles, with a population of 1,886,650 (Census 2000) in Butler, Clermont, Hamilton and Warren counties in the State of Ohio; Boone, Campbell and Kenton counties in the Commonwealth of Kentucky; and Dearborn County in the State of Indiana. The OKI region is part of the 15-county Cincinnati-Middletown, OH-KY-IN Metropolitan Statistical Area (June 2003 definition) with a population of 2,009,632 (Census 2000).



ORGANIZATIONAL STRUCTURE

OKI is governed by a Board of Director's and an Executive Committee. The Board of Director's is empowered to control all activities of the Council of Governments. The Executive Committee has all the powers necessary to act in the name of the director's. The Board of Director's elects a President, First Vice-President, Second Vice-President and Treasurer. The OKI Executive Director serves as Secretary. The term of office for the members of the Board of Director's, Executive Committee and elected officers is one year or until successors have been selected and qualified. The President serves as the Chairperson of the Executive Committee.

The Board of Director's consists of:

- One official elected by the governing body of each member county;
- One elected official from each municipal corporation having a population over 5,000 (if any state in the region does not have a municipal corporation of this size, this member will be selected from the elected officials of the largest municipal corporation in the region within the state);
- One elected public official of each township located in each Member county located in Ohio, which township has a population of 40,000 or more persons according to the Approved Census, such person to be selected by the governing body of the township concerned, plus
- One elected public official of a township located in each member county located in Ohio, which township has a population of less than 40,000 persons according to the approved census, such elected public official to be selected by the Association(s) of Township Directors and Clerks, or its equivalent, in those counties where such a body or bodies exists. If there is no selection by an appropriate Association of Township Directors and Clerks or if more than one Association could select such an elected public official, the COUNCIL may elect such an elected public official, plus
- One elected public official of each Member county located in Indiana and Kentucky or of a municipal corporation within such Member county, such public official to be selected by the respective Member county.
- One person selected by each area or county planning agency within the region;
- One person selected from each municipal planning agency of any municipal corporation having a population of over 40,000;
- Not more than 20 non-elected residents of the OKI region;
- Not more than ten (10) other elected public officials of general purpose local government from counties, municipal corporations, townships, special districts or other political subdivisions within the OKI Region, or persons responsible to such officials, as the Board of Directors may select.
- One person selected by each of the Departments or Cabinets of Transportation of Ohio, Kentucky and Indiana.
- One person selected by each of the Boards of Directors of the Southwest Ohio Regional Transit Authority, the Transit Authority of Northern Kentucky and the Butler County Regional Transit Authority.

The constituency of the elected public officials of the Board must represent 75 percent of the aggregate population of the OKI region, and at least two-thirds of the director's must be officials elected by the residents of the region.

The Executive Committee consists of:

- The President, First Vice-President, Second Vice-President and Treasurer of the Board of Director's;
- Each Director selected pursuant to Article III, Paragraph B, Section 1.a., that is, an elected public official from each member county;
- Each Director selected from each municipal corporation having a population exceeding 40,000;

- Three Directors (one from each state within the OKI Region), selected pursuant to Article III, Paragraph B, Section 1b, each of whom was elected by a municipal corporation having a population less than 40,000. The Board of Directors shall select which of its members so qualifying shall serve on the Executive Committee.
- Four Directors selected pursuant to Article III, Paragraph B, Section 1.c (ii) or (iii). The Board of Directors shall select which of its members so qualifying shall serve on the Executive Committee; provided that if possible, the Board of Directors shall select at least one Director who represents a township in Ohio having a population of less than 40,000 pursuant to Article III, Paragraph B, Section 1.c(ii).
- Each Director selected by each legally constituted area or regional planning agency;
- Three additional Director's selected by the Board;
- One representative each from the Transit Authority of Northern Kentucky Board of Directors, the Southwestern Ohio Regional Transit Authority Board of Directors; and Butler County Regional Transit Authority.
- Representatives from the State Departments of Transportation.

Each member of the Executive Committee, may nominate one alternate to represent and to take the place of that member for all purposes including voting, at any meeting of the Executive Committee from which that member is absent. The constituency requirements and length of term for the Executive Committee are identical to that of the Board of Director's. The Board and/or the Executive Committee may create any committees they deem appropriate and necessary. Current standing committees include the Budget Committee (a subgroup of the Executive Committee), Intermodal Coordinating Committee (ICC), Groundwater Committee, ARTIMIS Advisory Committee, Regional Incident Management Task Force, OKI Land Use Commission, and the Environmental Justice Advisory Committee.

The Executive Director is the administrator of OKI, responsible for carrying out the policies and programs of the Board of Director's and its Executive Committee and applicable federal and state laws and regulations. The Executive Director has the authority to employ, assign, supervise and release all employees of OKI, within the framework and general limitations and policies established by the Board of Director's and its Executive Committee.

2007 OFFICERS

President	Christine L. Maticic
First Vice President	Steve Pendery
Second Vice President	Pat DeWine
Treasurer	Mary C. Walker
Past President	Gary W. Moore
Secretary	Mark R. Policinski

EXECUTIVE COMMITTEE

Christopher Amburgey	Ralph B. Grieme, Jr.	Gary W. Moore
Orion H. Bell, IV	Jeff L. Hughes	Steve Pendery
Ken Bogard	Gregory Jolivet	Ken Rehtin
Bob Boswell	Martin Judd	Kenneth F. Reed
William Brayshaw	George Lang	Peggy Reis
Keith Corman	Stephan Louis	Elmo Rose
Robert T. Craig	Diana Martin	Tom Schomaker

John Cranley
Bill Cunningham
Pat DeWine
Ralph A. Drees
Elizabeth Fennell
Cathy Flaig
Christopher D. Flaig

Melvin Martin
Christine Matacic
Larry Maxey
Joel McGuire
Bob McGee
Steve Megerle
Charles E. Mitchell

Steve Stevens
Mary C. Walker
Thomas Weidman
Robert Williams
David G. Young

2007 OKI BOARD OF DIRECTORS

MEMBER COUNTIES

Gary W. Moore, Boone County Fiscal Court
Gregory Jolivette, Butler County Board of Commissioners
Steve Pendery, Campbell County Fiscal Court
Mary C. Walker, Clermont County Board of Commissioners
Jeff L. Hughes, Dearborn County Board of Commissioners
Pat DeWine, Hamilton County Board of Commissioners
Ralph A. Drees, Kenton County Fiscal Court
David G. Young, Warren County Board of Commissioners

MUNICIPALITIES WITH POPULATION OVER 5,000

W. David Hart, Alexandria, KY
Steven Guidugli, Bellevue, KY
James W. Sumner, Blue Ash, OH
Steve Braun, Cheviot, OH
John Cranley, Cincinnati, OH
Steve Megerle, Covington, KY
Robert Allen, Dayton, KY
Andy Diehn, Deer Park, OH
Mark Steffen, Edgewood, KY
G. Aaron Huff, Elsmere, KY
Paul Hahn, Erlanger, KY
Martin H. Judd, Fairfield, OH
Julie Metzger Aubuchon, Florence, KY
Wynndel Burn, Forest Park, OH
Thomas E. Holocher, Ft. Mitchell, KY
Mary H. Brown, Ft. Thomas, KY
Gene Weaver, Ft. Wright, KY
Christopher D. Flaig, Hamilton, OH
Joel McGuire, Harrison, OH
Charles W. Roettger, III, Highland Heights, KY
Mike Little, Independence, KY
Joseph Beech, III, Indian Hill, OH
Bill Cunningham, Lawrenceburg, IN
Jeffrey D. Monroe, Ph.D., Lebanon, OH
Todd Osborne, Loveland, OH

David Sams, Madeira, OH
Tom Grossmann, Mason, OH
Christopher Amburgey, Middletown, OH
Kimberly McBeath, Milford, OH
Suzi Rubin, Monroe, OH
Lynda Roesch, Montgomery, OH
William DeBruler, Mt. Healthy, OH
Beth Fennell, Newport, KY
Thomas R. Graves, North College Hill, OH
Victor Schneider, Norwood, OH
Kenneth H. Bogard, Oxford, OH
Robert Ashbrock, Reading, OH
Virgil G. Lovitt, II, Sharonville, OH
Mark Quarry, Silverton, OH
Edward F. Knox, Springdale, OH
Peggy Brickweg, St. Bernard, OH
Dan Bell, Taylor Mill, KY
Raymond L. Nichols, Trenton, OH
Mike Sadouskas, Villa Hills, KY
Jim O'Reilly, Wyoming, OH

BOARDS OF TOWNSHIP TRUSTEES 40,000 OR MORE POPULATION

Peggy D. Reis, Anderson Township
Keith N. Corman, Colerain Township
Charles E. Mitchell, Green Township
Bob McGee, Union Township
George F. Lang, West Chester

BOARDS OF TOWNSHIP TRUSTEES UNDER 40,000 OR MORE POPULATION

Christine Matacic, Butler County Association of Townships Trustee & Clerks
Tom Dix, Clermont County Township Association
Thomas Weidman, Hamilton County Township Association
Elmo Rose, Warren County Association of Township Trustee & Clerks

PUBLIC OFFICIALS FROM KENTUCKY AND INDIANA

Ken Rehtin, Campbell County Fiscal Court
Cathy Flaig, Boone County Fiscal Court
Kris Knochelmann, Kenton County Commissioner
Richard Fox, Dearborn County Board of Commissioners

COUNTY PLANNING COMMISSIONS

Greg Breetz, Boone County Planning Commission
Michael F. Juengling, Butler County Planning Commission
Mike Williams, Campbell County Planning & Zoning Commission
TBA - Clermont County Planning Commission
Dennis Kraus, Dearborn County Planning Commission

Melvin Martin, Hamilton County Regional Planning Commission
John R. Wells, Kenton County Planning Commission
Ralph B. Grieme, Jr., Northern Kentucky Area Planning Commission
Robert T. Craig, Warren County Regional Planning Commission

MUNICIPAL PLANNING COMMISSIONS 40,000 OR MORE POPULATION

James Tarbell, Councilmember, Cincinnati (City) Planning Commission
Timothy Bachman, Fairfield (City) Planning Commission
Teri A. Whitmore, Hamilton (City) Planning Commission
Martin D. Kohler, Middletown (City) Planning Commission

RESIDENTS

Craig Beckley, Dearborn County Association of TT&C
Ed Burdell, Citizens for Civic Renewal
Scott Crowell, Clermont County Board of Commissioners
Michael Fox, Butler County Board of Commissioners
Joyce Kinley, The Amos Project
Robert Laws, Citizen
Steven Love, Greater Cincinnati & N. Kentucky African American Chamber of Commerce
Larry Maxey, Citizen
James Parsons, Taft, Stettinius & Hollister LLP
David Pepper, Hamilton County Board of Commissioners
Todd Portune, Hamilton County Board of Commissioners
Bob Proud, Clermont County Board of Commissioners
Kenneth F. Reed, Citizen
James Ritter
Mike Rozow, Dearborn County Chamber of Commerce
Mike Schuster, MSA Architects
V. Anthony Simms-Howell, Ohio Commission on Hispanic/Latino Affairs
Steve Stevens, N. Kentucky Area Chamber of Commerce
Pat Arnold South, Warren County Board of Commissioners
Ellen van der Horst, Cincinnati USA Regional Chamber

OTHER ELECTED OFFICIALS

William Brayshaw, Hamilton County Engineer's Office
Courtney Combs, Ohio State Representative
Pat Manger, Clermont County Engineer's Office
Sal Santoro, Kentucky State Representative
Neil Tunison, Warren County Engineer's Office
Gregory Wilkens, Butler County Engineer's Office

***PERSONS RESPONSIBLE TO ELECTED OFFICIALS OR FROM
SPECIAL PURPOSE DISTRICTS***

Richard Crist, Kenton County Airport Board
Dennis Gordon, Northern Kentucky Area Planning Commission
Pamela E. Mullins, Cincinnati Public Schools

Christine Thompson, Mill Creek Watershed Council of Communities

VOTING EX-OFFICIO MEMBERS

Orion H. Bell, IV, Butler County Regional Transit Authority
Robert Williams, Indiana Department of Transportation
Tom Schomaker, Kentucky Transportation Cabinet
Diana N. Martin, Ohio Department of Transportation
Stephan Louis, Southwest Ohio Regional Transit Authority
Bob Boswell, Transit Authority of Northern Kentucky

OKI LAND USE COMMISSION

(Entire Board serves – Mel Martin, Chairman)

INTERMODAL COORDINATING COMMITTEE

Timothy P. Gilday, Chairman

Andrew Aiello	Adam Goetzman	Stephen Murphy
Marsha Ball	Casey Grady	Robert Nicolls
Orion Bell	Valerie Griffin	John Niehaus
John Braun	Jerry Haddix	Emmanuel Nsonwu
Peggy Brickweg	Robert Hans	James E. Parsons
Benjamin Capelle	Allan Harris	Ralph Reigelsperger
Cory Chadwick	Ted Hubbard	Peggy D. Reis
Jun-Han Chen	Helen Hunter	Cheri Rekow
Kevin Chesar	Douglas Johnson	Timothy J. Reynolds
Kevin Costello	Michael F. Juengling	Kim Satzger
John Creech	James P. Jurgensen	Greg Sketch
Kathryn Dale	Martha Kelly	Craig Stephenson
Ronald Davis	Peter J. Klear	Amy Thomas
Steve DeHart	J. Todd Listerman	Greg Tulley
Erin Donovan	Keith Logsdon	Reginald Victor
David Duckworth	Rick Lunnemann	Joe Vogel
Annalee Duganier	Mark McCormack	Thomas Voss
Bernadette Dupont	Charles Meyers	Carl (Doug) Walker
Tom Ewing	David Mick	Robert Ware
John Fonner	Edward Moore	Gregory J. Wilkens

CORRIDOR STUDY/SPECIAL PURPOSE COMMITTEE CHAIRS

ENVIRONMENTAL JUSTICE ADVISORY COMMITTEE – Allan Harris, Chair
GROUNDWATER COMMITTEE – Dave Weihrauch, Chair
REGIONAL INCIDENT MANAGEMENT TASK FORCE – Richard Janke, Chair
REGIONAL OZONE COALITION – Sarah Dowers, Chair
I-471 STUDY – Judge Executive Steve Pendery, Chair

OKI ENVIRONMENTAL JUSTICE ADVISORY COMMITTEE

Allan C. Harris, Chairman

Gina Douthat, TANK (Transit Authority of Northern Kentucky)
Bernadette Dupont, Federal Highway Administration – KY Division
Gilberto Esparza, Hispanic Resource Center
Casey Grady, N KY Area Development District
Allan C. Harris, Cincinnati NAACP Branch
Linda L. Huff, N. KY Community Action Commission
Hans Jindal, Ohio Department of Transportation
Joyce Kinley, The AMOS Project
Lin Laing, Center for Independent Living Options
Gregory Mason, Cincinnati State Technical & Community College
Hon. Gary W. Moore, Boone County Fiscal Court
Hon. Steve Pendery, Campbell County Fiscal Court
Kenneth F. Reed, City of Trenton, Resident
Sharmili Sampath, N. KY Area Planning Commission
Shirley Scott, Federal Highway Administration – KY Division
Maureen Sullivan, Urban Appalachian Council
Mayor Raymond Terrell, Village of Woodlawn
Greg Tulley, City of Newport Planning & Development

PLANNING PRIORITIES

There are three key documents produced by the metropolitan planning process: the Unified Planning Work Program, The Regional Transportation Plan and the Transportation Improvement Program. These and other important activities are discussed below.

Unified Planning Work Program (UPWP) (Update Schedule: Yearly; Next Update: May 2008)

This document, prepared annually by OKI in cooperation with local and state officials, transit agencies and others, documents all planning activities anticipated during the fiscal year regardless of funding sources, while incorporating the comprehensive intermodal planning process. This continuous planning process is responsive to the needs of the local area and to the changes occurring in the region for which current data concerning land use, travel and transportation facilities must be continuously maintained.

OKI Regional Transportation Plan (RTP) (Update Schedule: every four years; Next Update: June 2008)

The OKI Board of Trustees adopted the OKI 2030 Regional Transportation Plan on June 10 2004. The Plan was amended several times since then. Amendment 4 integrated the Safe Accountable Flexible Efficient Transportation Equity Act: A Legacy for Users (SAFETEA-LU) planning regulations. A region that has adopted a Plan that is SAFETEA-LU compliant plan is permitted by the regulations to switch from a three year Plan update cycle to a four year cycle. OKI will be moving to a four year cycle. The Plan serves as a blueprint for transportation projects in the region through the year 2030. It addresses future needs created by growth and development. At the same time, it responds to SAFETEA-LU and Clean Air Act requirements that call for mitigating congestion, addressing air quality and other environmental, social and financial issues.

This Plan meets federal regulations in that it is constrained fiscally and with regard to mobile source emissions (air quality). An expanded section related to community impacts and environmental justice is included. As in the previous Plan, this Plan provides the framework for corridor studies and other initiatives.

Transportation Improvement Plan (TIP) (Update Schedule: every two years; Next Update: May 2009)

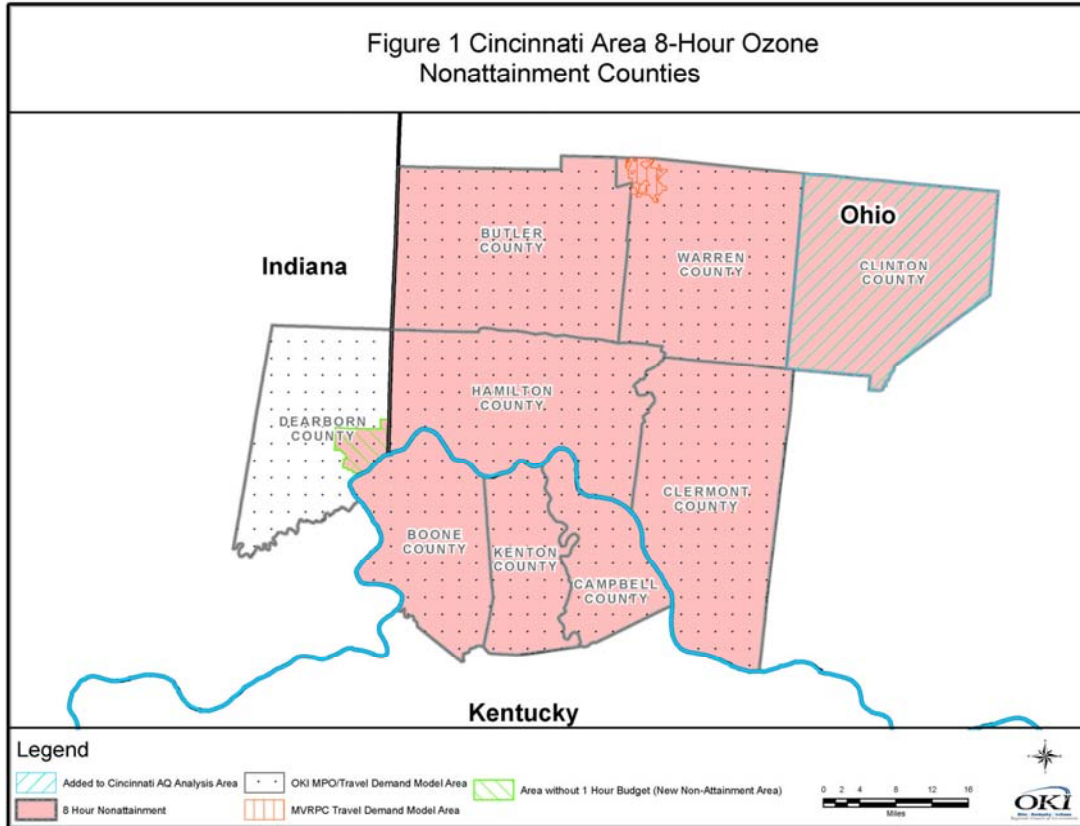
This document is developed every two years and reviewed periodically in cooperation with state and local officials, regional and local transit operators and other affected transportation, regional planning and implementing agencies. The TIP consists of improvements recommended from the short-range planning process, elements of the long range plan and the transit development programs of the various transit systems. Specifically, the TIP: 1) identifies transportation improvements recommended for advancement during the four year program period; 2) indicates the area's priorities; 3) groups improvements of similar urgency and anticipated staging into appropriate staging periods; 4) includes realistic estimates of total costs and revenues for the program period; and 5) is financially constrained. The entire TIP is tested to establish its conformity with the State Implementation Plan for air quality.

The TIP includes project-by-project listings which are modified periodically and contain: 1) sufficient descriptive material of work, termini and length to identify the project; 2) estimated total cost and the amount of federal funds proposed to be obligated during the program year; 3) proposed source of federal and non-federal funds; and 4) identification of the recipient and state and local agencies responsible for carrying out the project.

Mobile Source Emissions Analysis

Pursuant to provisions of the CAAA of 1990, U.S. EPA designated a nine county area in the Cincinnati area as a basic nonattainment area for ozone under the eight-hour ozone standard in April 2004. In December 2004, U.S. EPA designated an eight county Cincinnati area as nonattainment under the annual fine particulate matter (PM2.5) standard. The Cincinnati ozone nonattainment area includes Lawrenceburg Township in Dearborn County Indiana, the Kentucky counties of Boone, Campbell and Kenton, and the Ohio counties of Butler, Clermont, Clinton, Hamilton and Warren (Figure 1). The PM2.5 nonattainment area is identical except for the exclusion of Clinton County. The OKI Regional Council of Governments, as the Metropolitan Planning Organization (MPO), consists of Dearborn, Boone, Campbell, Kenton, Butler, Clermont, Hamilton and Warren counties. *OKI's Regional Transportation Plan and Transportation Improvement Program* address the MPO area only. The cities of Franklin and Carlisle in Warren County are part of the Miami Valley Regional Planning Commission (MVRPC) planning area. Projects within this portion of Warren County are included in OKI's conformity analysis. Clinton County is outside of the OKI region, but is part of the nonattainment area. The Ohio Department of Transportation (ODOT) is the lead planning agency for Clinton County and prepares the emissions analysis for the Clinton County portion of the air quality conformity determination.

All states with nonattainment areas are required to revise their State Implementation Plans (SIPs) to demonstrate future compliance with the federal air quality standards. In 2004, OKI established a Clean Air Consortium of local business and government leaders to prioritize emission reduction strategies and provide these recommendations to the state air agencies. The Consortium recommendations for compliance with the ozone standard were completed in 2005. Strategies for attaining the PM2.5 standard were developed in early 2007.



Corridor Studies

OKI has been a leader both regionally and nationally in initiating and managing corridor studies. Since 1997, 13 corridor studies have been completed by OKI. The I-471 Corridor Study is currently underway. These studies, a major component of the Long Range Plan, permit detailed evaluation of problems and potential. In addition, OKI has overseen county transportation plans or studies for Boone, Campbell, Kenton and Dearborn counties.

Transportation System Management (TSM)

The TSM element is included as part of the OKI Transportation Improvement Program. Inclusion of the TSM activities in the TIP and specific reference to both the TIP and TSM in one resolution of adoption indicates the close relationship between these two activities. In addition, TSM is addressed in OKI's transportation plan.

Congestion Management Process (CMP)

For the purpose of monitoring system performance, OKI has identified a regional Congestion Management Network. It includes the roadways for which data are collected for identifying congestion problems and needed improvements, and for assessing the effectiveness of implemented actions. The congestion management network includes about 1,600 road miles that carry nearly 75% of the total regional traffic.

Ongoing system monitoring is accomplished through various data acquisition techniques including: 1) data-base management of traffic count data performed by OKI and its partners; (2) travel time surveys on the congestion management network beginning with the National Highway System (NHS) (this UPWP commits to year three of the second three year cycle); (3) real-time travel data from ARTIMIS; (4) acquisition of transit ridership data from transit operators; (5) transit operational data from transit operators; (6) periodic inventory of freight operations in the region; (7) periodic field review of the region's highway system attributes; (8) detailed travel data in ongoing transportation corridor study areas; and (9) a framework for evaluating the effects of system improvements.

Transit Planning Assistance

OKI has provided transit planning assistance to all federally-funded of public transit systems in the region: Southwest Ohio Regional Transit Authority (SORTA), Transit Authority of Northern Kentucky (TANK), the Middletown Transit System, Clermont Transportation Connection, Warren County Transit Service and the Butler County Regional Transit Authority (BCRTA).

Specialized Transportation

OKI is actively involved in the review of Specialized Transportation Program applications from private, nonprofit agencies in Butler, Clermont, Hamilton and Warren counties. Each year, the OKI Intermodal Coordinating Committee establishes a subcommittee which hears and scores oral presentations from qualified applicants. The Job Access Reverse Commute/New Freedom planning coordination efforts commenced in FY2006 and staff will complete the first JARC/New Freedom Plan as outlined in this UPWP. The Plan will produce a coordinated approach to transit/paratransit investments for the region.

Transportation Enhancements (TE)

Beginning with ISTEA and continuing with TEA-21 and SAFETEA-LU, the Ohio Department of

Transportation has annually allocated a portion of the state's Transportation Enhancement (TE) funding to the 16 Metropolitan Planning Organizations in Ohio for distribution within their respective counties. OKI awarded \$3 million in funding to 15 local applicants in May 2000. During 2002-03, the award procedures were revised, and a second program cycle was initiated in early 2003. Since 2003, awards have been made on a project-by-project basis, as they advance to become eligible for funding. By the end of 2005, a total of 13 projects utilizing \$3.94 million in TE funding had been completed, five more (\$2.67 million) were let to construction, one (\$480,000) was scheduled for sale late in FY06 and five more (\$2.83 million) are programmed for FY07 and beyond.

Technical Services

OKI has for many years allocated a portion of its resources to the provision of technical assistance to units of local government in the areas of transportation planning, traffic engineering and process consultation. While this does not constitute a major element of the agency's overall mission, it is a service which is greatly appreciated by local governments, many of which do not have either the staffing or the financial resources to have access to these types of services on their own. Specifically, OKI has provided technical services and acted in an umbrella capacity for three multi-jurisdictional trail system development efforts in recent years.

RideShare

OKI's RideShare service has been operational for 30 years. RideShare is a voluntary, employer-oriented activity to increase vehicle occupancy, decrease miles of travel and improve air quality. A full-time staff person is devoted to promoting and operating RideShare. The strategies include direct marketing to major employers, their employees, the general public, and community groups. Promotional tools include freeway and arterial signing bearing the 241-RIDE telephone number, brochures, radio advertising including drive time reports, and bus signs.

Participation Plan, Title VI, ADA and Section 504

For many years OKI planning activities have had an active public outreach component. In 2007, the agency adopted an updated Participation Plan (formerly known as a Public Involvement Plan and Environmental Justice Program). OKI is dedicated to ensuring a fair and equitable planning process and business practice. The OKI Participation Plan outlines processes for consultations practices related to the Disadvantaged Business Enterprises (DBE), Title IV and Section 504 of Rehabilitation Act of 1973 requirements. OKI has dedicated staff to ensure compliance with and support of the Council's responsibilities and practices related to these issues.

Strategic Policy Plan

Pursuant to its charge of maintaining a comprehensive, cooperative and continuing transportation planning process, OKI adopted a strategic regional policy plan in 2005. In addition to addressing federal transportation planning mandates, the plan was conceived to save limited tax dollars through better coordination of local land use planning and regional transportation planning. Specifically, the plan encourages land use patterns that promote multimodal travel and the efficient use of land, natural resources, and public facilities.

The strategic plan is direction-setting for the tri-state region, not just for the OKI COG/MPO. It promotes cooperative planning and decision-making throughout the tri-state region, and involves OKI, local

governments, special districts, state and federal agencies, and the private and civic sectors. The strategic plan also verifies and emphasizes that people live at the scale of the region, moving through multiple jurisdictions several times a day to work, shop, or seek entertainment. It also emphasizes that taxpayers finance the pattern of land development and infrastructure.

Implementation of the strategic plan is taking place pursuant to an action plan and timeline established in FY 06. Implementation is being accomplished by various jurisdictions and organizations on a voluntary basis and by OKI.

General Coordination Efforts Between OKI, State DOTs, FHWA, FTA, RTAs

OKI has worked closely with the ODOT, KYTC, INDOT, Federal Highway Administration (FHWA), Federal Transit Administration (FTA), Environmental Protection Agency (EPA), SORTA, TANK, Middletown Transit Service, Clermont Transportation Connection, Warren County Transit and BCRTA in developing the multimodal approach to planning for the region. OKI has also coordinated with and been a participant in the development of many studies including each of the state-wide transportation plans. OKI shares data with the various planning partners and agencies and provides technical assistance whenever possible.

FY 2008 Unified Planning Work Program Highlights

- 1) **601 Short Range Planning:** Assistance to local jurisdictions in development of pedestrian and bike planning activities including Safe Routes to School programs, access management plans and the continuation of an active transportation enhancement (TE) program.
- 2) **602 Transportation Improvement Program:** Staff will continue an active program oversight. Work will continue to make the electronic version of the TIP shown on the OKI website interactive.
- 3) **605 Surveillance:** Continued enhancement of GIS system capabilities and integration with traffic microsimulation, travel forecasting and visualization techniques. Acquisition and refinement of additional datasets will continue. Continued refinement of the newly converted Cube/Voyager travel model techniques and procedures. Traffic simulation for small area studies will be developed. Traffic data will be collected and processed. On-line mapping related to TIP projects will be developed.
- 4) **610 Long Range Planning:** Continue an aggressive congestion management (CMP) program. The OKI 2030 Regional Transportation Plan will be updated and reflect SAFETEA-LU compliance. Continue to implement a voluntary strategic regional policy plan for growth and development. Development of a fiscal impact model for application in the OKI region.
- 5) **625.2 Transportation Services - Participation Plan:** Implementation of the updated participation plan. Formerly known as the Environmental Justice Policy, OKI's policy for public involvement will now be titled Participation Plan (PP). On-going support of area studies.
- 6) **665.4 – Regional Ozone Reduction Program:** The program will conduct education and outreach activities aimed at protecting public health and the local economy while working towards the attainment of the national ozone and particulate matter standards. The marketing and outreach activities for the clean air program will be scaled back in FY08 due to a reduction in the program's overall budget.
- 7) **665.X – I-74 Corridor Infrastructure and Land Use Plan:** Develop a small area plan for land adjacent to I-74 from Sunman, Indiana to Dry Fork Road in Harrison Township. Plan will be completed in FY08.
- 8) **667.1 – Commuter Assistance Services: RideShare:** Continue to provide transportation alternatives to commuters within the Tri-State area, thereby providing energy conservation, traffic and pollution reduction and preserving the quality of life in the OKI region.
- 9) **674.1 – Job Access Reverse Commute/New Freedom:** New program for OKI. The governors of Ohio and Kentucky and have identified OKI as the designated recipient for federal funds job access and reverse commute (Section 5316) and the New Freedom Program (Section 5317). To qualify for funding, projects must be included in a locally developed Coordinated Public Transit-Human Services Transportation Plan. OKI will develop the plan with assistance from stakeholders. The State Departments of Transportation will remain the designated recipient for the 5310 program.
- 10) **685.1 – Indiana Exclusive: Dearborn County Transportation Planning:** Continue elements of the 3C planning process for Dearborn County.
- 11) **685.2 – Indiana Exclusive: Dearborn County Transportation Planning:** This work element will supplement the activities listed in 685.1 as necessary.
- 12) **686.1 – Kentucky Exclusive – I-471 Corridor Study:** Complete a study to identify transportation solutions for the I-471 corridor from the Ohio River to Cold Spring.

- 13) **686.3 - Kentucky Exclusive – Safety and Operations Studies:** Studies to be identified based on resources and needs of KYTC-D6.
- 14) **697.1 – Transportation Summary** – A transportation report summarizing the major findings and activities of the OKI transportation planning process.
- 15) **710.1 – Local Water Quality Activities:** Provide technical support for local agencies as time and resources permit.
- 16) **710.2 - Great Miami Drinking Water Protection Project:** Nine project partners will help OKI improve drinking water source protection in the lower Great Miami River watershed.
- 17) **710.3 - Mill Creek Headwaters Project:** A dozen project partners will help OKI implement programs that stabilize stream banks and restore floodplains.
- 18) **710.6 - Water Quality Program:** Continue to refine the base information and recommendations in the Regional Water Quality Management (“208”) Plan. As part of those activities, OKI is heightening awareness of water quality issues through public education, and its involvement in groundwater projects and watershed initiatives.
- 19) **720.1 – Mobile Source Emissions Planning:** Conformity analysis for the transportation plan and TIP updates and amendments. Continue coordination with state and federal agencies regarding air quality planning issues.
- 20) **800.1 – Regional Planning Activities:** Conduct analysis of economic development trends and issues.

Work Program



601 - SHORT-RANGE PLANNING

OBJECTIVE

To address short-term problems and needs relating to transportation of persons and goods in the OKI region, and to identify actions, including Transportation System Management (TSM) and Transportation Demand Management (TDM) measures, that present a systematic approach to solving these problems.

To coordinate with units of local government regarding the development and adoption of land use plans, thoroughfare plans, zoning ordinances, subdivision regulations, and other governmental controls addressing the relationship between land use planning and transportation planning.

To utilize the transportation planning expertise and resources of the OKI Technical Services staff in providing data, technical assistance and planning services to those responsible, within the public and private sectors, for community development and implementation programs. A major part of this element will be the development and implementation of transportation enhancement projects in the four Ohio counties.

To provide interaction between OKI staff and community planning or citizen organizations, relative to area wide or sub-area level transportation matters.

To provide, through workshop and conference sponsorships, training and support to public and private non-profit agencies to enhance and improve transportation capabilities and resources.

To update the OKI Regional Bicycle Plan document and the corresponding portion of the *OKI 2030 Regional Transportation Plan*.

PRODUCTS

- 1) Documentation supporting traffic operations improvement recommendations on problem intersections and roadway segments, or relating to analyses and recommendations involving other travel modes or conditions. (as appropriate)
- 2) Assistance to local governments in the development and implementation of access management plans and programs. (as appropriate)
- 3) Assistance in development and implementation of local and multi-jurisdictional bicycle/pedestrian plans. Includes guidance of work on feasibility studies and analyses, such as the Ohio River Trail, the Miami-2-Miami system, and the Williamsburg to Batavia Hike/Bike Trail. Also includes assessment of funding opportunities and constraints for bicycle and pedestrian facilities, and inclusion of appropriate bike/ped treatments in projects added to the TIP. A traffic count database for selected locations of cyclist and pedestrian travel. An updated Regional Bicycle Plan, consistent with federal guidance. (6/08)
- 4) Administration of OKI's Urban Area Transportation Enhancement Program. (6/08)
- 5) Assistance to local governments and advocacy organizations in developing Safe Routes to School programs (as appropriate).

- 6) A transportation planning/traffic engineering seminar, a safe routes to school workshop for local agencies, distribution of bicycle and pedestrian related maps, planning and safety information. (6/08)
- 7) Documentation of Scenic Byways Program activities. (as appropriate)
- 8) Assistance to units of local government and their project committees relative to the implementation of their transportation plans and programs, and their related land use development and monitoring activities. This can also include such activities as providing technical assistance to the Cincinnati Bike/PAC, the Great Miami Bikeway Committee, the Fairfax-Mariemont Loop Trail Committee, and the West Fork Mill Creek Greenways Committee. (as appropriate)
- 9) Distribution of miscellaneous data products, census materials, bike, mapping, safety products to citizens and public and private organizations. Updated OKI "Wanna Bike?" brochure. (6/08)
- 10) Transit planning assistance to any of the transit systems in the OKI Region consistent with identified needs, including Human Services Transportation Coordination as required under SAFETEA-LU. (as appropriate)
- 11) Evaluated Specialized Transportation Program applications and annual inspections of vehicles sponsored by the program. (6/08)

602 - TRANSPORTATION IMPROVEMENT PROGRAM

OBJECTIVE

To develop an effective, staged multi-year program that identifies and prioritizes transportation improvements. Projects are to be consistent with transportation plans and studies emanating from the urban transportation planning process, and the program is fiscally and air quality constrained.

PRODUCTS

- 1) A two-year TIP, including highway and transit programs, covering a four-year period, was prepared in FY07. While there will be numerous TIP amendments during FY08, the next biennial TIP will be prepared in FY09. Begin review of existing prioritization scoring to consider additional factors or updates to existing factors in the evaluation process.
- 2) To monitor and expedite projects in Ohio using STP, TE and CMAQ federal funds; in Kentucky using SNK federal funds; and, in Indiana using STP and CMAQ federal funds allocated to OKI with the state departments of transportation and local sponsors; and, to work with ODOT District 8 to lock-down projects for fiscal year 2009.
- 3) TIP amendments (as necessary).
- 4) Interactive online TIP to search the TIP database, print reports and view TIP maps. (6/08)
- 5) Regional prioritization of TRAC applicant projects. (9/07)
- 6) Annual Listing of Obligated Projects (10/07)

605 - SURVEILLANCE

OBJECTIVE

One of the objectives is to develop and maintain, on the appropriate update cycle, the basic data essential to transportation planning activities. Such a database represents current conditions within the region and permits comparison to previous as well as forecast periods to determine the impact of changing development and travel patterns on the planning process. Types of data to be maintained include trends in demographic and land use activity; the transportation system level of service and utilization; impacts on the natural resource base, including air quality and energy; and travel data. Another objective is to maintain the validity and operation of a travel demand model.

The travel demand model should be able to simulate the current trip making behavior and travel patterns. The travel demand model should be able to assess the impacts of proposed changes in land uses, transportation system, travel demand management strategies, and transportation control measures. The majority of the basic data now resides in GIS format, therefore maintaining existing datasets and building new GIS datasets to support transportation planning activities is a vital part of this work plan.

PRODUCTS

- 1) Updated transportation system characteristics data files. (6/08)
- 2) An updated/refined/enhanced travel demand/air quality model. (6/08)
- 3) Revised zonal socioeconomic files for 2005, 2010, 2020 and 2030, as needed.
- 4) OKI will provide traffic simulation products in support of the I-471 Corridor Study and other studies. (as appropriate)
- 5) Services to Census Bureau and processing of data requests from local government and citizens. (as appropriate)
- 6) Updated geographic databases. (on-going)
- 7) Up-to-date GIS software. (6/08)
- 8) Environmental spatial databases and maps. (as appropriate)
- 9) Streamlined internal workflow for presenting Travel Demand Model data. (on-going)
- 10) Enhanced 3-D visualization presentations and techniques. (6/08)
- 11) Transportation photo database. (6/08)
- 12) Online mapping services. (6/08)

610 – LONG RANGE PLANNING

OBJECTIVE

To update and refine the adopted long range transportation plan and carry out its

recommendations to 1) provide consistency with the requirements of the Safe Accountable Flexible Efficient Transportation Equity Act: A Legacy for Users (SAFETEA-LU) Metropolitan Planning Regulations and the Clean Air Act Amendments (CAAA) of 1990, 2) maintain a 20-year planning horizon, 3) further integrate a congestion management process into transportation planning and operations, 4) provide traffic projections and other plan information required by implementing agencies, 5) convene the necessary regional bodies to further ITS goals of the region through ARTIMIS, and 6) assist agencies in the analysis of transportation safety issues, 7) consider all modes as options for addressing the travel needs of the region.

To provide fair treatment and meaningful involvement of all people, regardless of race, color, national origin or income, with respect to the use of public-source transportation funding.

To identify linkages between land use and development and transportation policy and identify the fundamental impact of the transportation system on land use activity.

To implement a strategic regional policy plan which will guide communities' preferred development patterns and transportation system to fulfill desired future conditions. This policy plan was produced by the OKI Board of Directors (formerly Trustees) sitting as the Land Use Commission.

To support land use patterns that would promote multimodal travel alternatives and reduced trips, enhanced air quality and the efficient movement of people and good (freight).

To identify and evaluate opportunities for non single occupant vehicle travel, including transit, pedestrian and bicycle.

To assist local governments in drafting standards and criteria which recognize the relationship between land use, transportation, air quality and other infrastructure.

To provide project management resources for various transportation studies as identified in this work program.

Identify and engage stakeholders in all aspects of transportation planning activities.

To develop technologies that advance local governments and the public's ability to understand the impacts of proposed improvements through visualization techniques.

To provide project level traffic forecasts and turning movements

610.1 - Long Range Planning: SYSTEM MANAGEMENT

OBJECTIVE

A main theme advanced by SAFETEA-LU is the need to invest transportation resources in improving the management and operation of the transportation system and expand on consultation and ways to improve interagency and public involvement. This concept embraces not only the notion of improving the system's efficiency by mitigating congestion and expanding its carrying capacity, but also of improving the delivery of existing and planned or desired services. OKI will take new initiatives to improve system management and operation, which will include, but not necessarily be limited to, the following tasks:

PRODUCTS

- 1) Travel time surveys in FY 2008 will focus on the interstate portion of the Congestion Management Process network. A review of the performance changes of facilities with Cycle 1 and Cycle 2 data. (05/08)
- 2) Coordination with ODOT, KYTC, INDOT, local governments and major transit agencies on options for improving the management and operation of the existing system. (ongoing)
- 3) *OKI 2030 Regional Transportation Plan Update* (6/08).
- 4) Benefit/cost analysis of proposed transportation improvements (as appropriate)
- 5) Participation in regional, state and national forums on transportation planning issues. Participation in interagency consultation activities. Self certification of transportation planning activities by the OKI Board of Directors (formerly Trustees). FY09 UPWP. (5/08)
- 6) Project development activities for future corridor or special studies as identified.
- 7) Support of the Regional Incident Management Task Force as needed.
An updated regional ITS architecture for the OKI region consistent with the National ITS Architecture. (6/08)
- 8) Regional Safety Plan that identifies high crash concentrations and segments. Performance of a limited number of safety studies for ODOT and other agencies as requested. (6/08). Cooperation with ODOT, KYTC and INDOT in the development of their SHSP as needed.
- 9) Review and reappraisal of security elements leading to a fully integrated element of the overall transportation planning process. Identification of OKI's role in a regional security plan. (6/08)
- 10) OKI will maintain current Project Identification Forms (PIFs) for all Kentucky projects recommended in the *OKI 2030 Regional Transportation Plan*. PIFs will be maintained and revised per guidelines established by KYTC. OKI will maintain and revise the Unscheduled Projects List (UPL), for Kentucky projects identified through OKI's planning process.
- 11) Project level traffic forecasts and turning movements as requested utilizing the regional travel model and other software as appropriate.

610.4 – Long Range Planning: LAND USE
--

PRODUCTS

- 1) Documentation of presentations and consultations about the land use/transportation relationship, trends and distributed materials. (6/08)
- 2) Documentation of distribution of local comprehensive plan guidance, sample ordinances, and collateral materials, and of technical assistance provided. (as appropriate)
- 3) Documentation of fiscal impact and environmental resource valuation models adapted or modified for local government use in the OKI region. (6/08)

- 4) Documentation of local governments and school district survey regarding interaction and coordination on land use and transportation issues. (6/08)
- 5) Documentation of business and merchants survey regarding public facilities and services needs and uses. (6/08)
- 6) Documentation of impediments to brownfields redevelopment, available redevelopment funding sources and distribution of results with local and regional officials. (6/08)

625.5 Transportation Services: PUBLIC INVOLVEMENT PLANNING

OBJECTIVE

To incorporate Title VI and Section 504 of the Rehabilitation Act of 1973, along with other Environmental Justice (EJ) concerns, in OKI's planning process. OKI will continue to implement a Participation Plan (PP) utilizing traditional methodologies as well as exploring new methodologies relative to the fair treatment and meaningful involvement of all people regardless of race, color, national origin, age, disability or income.

PRODUCTS

- 1) Participation Plans (PP) for major OKI studies and projects as needed.
- 2) Annual Title VI and DBE program compliance reviews will be conducted.
- 3) Input to the TIP and *OKI 2030 Regional Transportation Plan* updates will be provided as needed by applying the information in the maps coordinating the location of all transportation projects in relation to Title VI/EJ communities so that the EJAC can effectively determine if proper consideration is being given to underserved communities.
- 4) Public outreach materials, locations, events, etc.

665.4 Special Studies: REGIONAL OZONE REDUCTION PROGRAM

OBJECTIVE

To continue the Regional Ozone Reduction Program designed to raise public and business awareness therefore reducing pollution levels in order to protect public health, the local economy and attain the national ozone and particulate matter standards.

PRODUCTS

- 1) An outreach program geared toward the reduction of pollutants in the eight-county urban airshed.

667.1 Commuter Assistance Services: RideShare

OBJECTIVE

To provide transportation alternatives to commuters within the Tri-state area; thereby promoting energy conservation, reducing traffic and pollution, saving money and helping to preserve the quality of life for those who live in the OKI region.

PRODUCTS

- 1) A detailed report of database activities such as additions, deletions, counts of applicants provided with match-lists, evaluation of marketing activities based on how registrants heard about RideShare and the current database size.
- 2) Retain existing vanpools through rider recruitment and form new vanpools to reduce single-occupant vehicles from Tri-state roads.
- 3) An accurate Guaranteed Ride Home database and an efficient reimbursement program.
- 4) Execution of an annual marketing plan outlining the most effective approaches to increase awareness and participation in all aspects of the OKI RideShare program.

674.1 – Mass Transit Exclusive: SORTA Planning Studies

OBJECTIVE

The Southwest Ohio Regional Transit Authority's (SORTA) mission is to provide cost-effective, efficient, quality mass transit services within available resources to enable people to access their chosen activities in our community.

PRODUCTS

- 1) Uptown Planning Initiatives – Continuation of planning activities initiated as part of the Uptown Transportation Study including refinement of transit hub, improved operating speeds on existing routes, and related transit improvements; continuation of the development and analysis of programs and initiatives in coordination of the University of Cincinnati, including potential free ride program and other services (OKI study, completion 2006);
- 2) Western Hills Transit Hub Project – Site assessment and development of a transit hub to serve as the termination/layover/transfer point for nine Metro routes on the west side of the service area;
- 3) Mini-Hub Program – Conceptual and final design development and location assessment of a mini-hub passenger waiting facilities;
- 4) Layover Site Assessment – Continuation of assessment of requirements for the design and development of Metro layovers in Amelia, West Chester and other locations in the Metro service area. Each site assessment will consider design and cost estimates for possible route modifications;

- 5) Eastern Corridor Study – An assessment of commuter travel patterns to, from and within the eastern corridor of the region and how best to reduce congestion and enhance economic development, inclusive of transit alternatives (Hamilton County TID, completion n/a)

674.1 – JARC/New Freedom Coordinated Transportation Plan

PRODUCTS

- 1) Public meetings and surveys as needed to update the Coordinated Public Transit-Human Services Transportation Plan. (as necessary)
- 2) Updated Coordinated Public Transit-Human Services Transportation Plan and prioritization process for Section 5316 and 5317 federal funds (as necessary)
- 3) Prioritized recommended listing of Section 5316 and 5317 projects for FY2008.

674.3 Mass Transit Exclusive: SORTA PLANNING STUDIES

PRODUCTS

- 1) Uptown Planning Initiatives- Continuation of planning activities initiated as part of the Uptown Transportation Study including exploratory development of an Uptown Transit Hub and other passenger waiting facilities; replacement of all Metro bus stop signage in Uptown, as funded by OKI; pass program development with the University of Cincinnati; and improved transit services.
- 2) Mini-Hub Program- Continuation of the development of mini-hub passenger waiting facilities, including securing site, preparation of Categorical Exclusion documentation, and final design of facilities.
- 3) Hub/Park & Ride Development- Continuation of recent assessment of requirements for the design and development of hubs, park & ride and/or layover facilities in the west side of the Metro service area, Amelia, and other locations. Each site assessment will consider design and cost estimates for possible route modifications.
- 4) Shoulder Lane Pilot Project- Implementation (subject to ODOT approval) of a pilot project allowing Metro buses to use shoulder lanes on I-71 between Kenwood and Kings Island during periods of peak congestion; monitoring and evaluation of the pilot project; initial planning efforts for possible expanded shoulder lane use by transit for traffic mitigation during I-75 reconstruction in future years.
- 5) Comprehensive Operational Analysis Assessment- Review of major changes implemented to the fixed route system in 2004, including ridership response, productivity, future growth, and changes in land uses and employment.
- 6) Corridor and Transportation Study Participation and Assistance- Continued participation in corridor studies and other major regional transportation initiatives including the Eastern Corridor, I-471 Corridor, downtown and uptown connectivity-related initiatives, and the OKI 2030 Regional Transportation Plan update.

674.2 Mass Transit Exclusive: TANK Planning Studies

OBJECTIVE

TANK planning will focus on three objectives in FY2008. The first is to build the foundation for the long-term recommendations of the Transit Network Study. These recommendations were adopted into the regional long range transportation plan in FY 2007. TANK will work with our regional partners to further this effort and to begin specific strategic planning for the highest priority projects. Secondly, TANK will complete a new round of consumer and community research. This research will help to inform future planning, marketing and community outreach efforts. Lastly, TANK will continue to administer ongoing planning practices such as the Substandard Route Review, Service Request Process, and the maintenance of TANK GIS/GPS data.

PRODUCTS

- 1) Implementation of the next phase of the Transit Network Study recommendations
- 2) Final report and conclusions from TANK's consumer and community research
- 3) Updated Substandard Route Review and Service Request Information

674.3 Mass Transit Exclusive: MIDDLETOWN TRANSIT PLANNING STUDIES

OBJECTIVE

Perform the outlined planning activities so that the collected data and updated procedural plans results in a guide for Middletown Transit System direction.

PRODUCTS

- 1) Passenger mileage survey for fixed route and paratransit service for NTD compliance.
- 2) Financial evaluation of "Real Time" System for MTS
- 3) Operational indicators for benchmarking, MTS performance management system and reports to funding agencies.
- 4) Participating in Regional Studies to aid in planning and coordinating transportation resources.

674.4 Mass Transit Exclusive: CLERMONT TRANSPORTATION CONNECTION

OBJECTIVE

Clermont Transportation Connection (CTC) will initiate plans during FY2008 to add two shuttle routes within Clermont County. These routes will operate similar to fixed routes and are planned to be additions to at least two routes that were started in 2007. The end goal is the creation of these shuttle routes to lay the groundwork for a fixed route system.

PRODUCTS

- 1) The primary product will be the plan for two shuttle routes. As these routes develop, secondary products may be created.

685.1 Indiana Exclusive: DEARBORN COUNTY TRANSP. PLANNING (CPG)
--

OBJECTIVE

The objective of this work element is to continue implementation of elements of the 3C planning process for Dearborn County.

PRODUCTS

- 1) Provide for Air Quality Conformity determinations for Lawrenceburg Township (as necessary)
- 2) Incorporate Dearborn County projects in the OKI TIP (as necessary)
- 3) Incorporate Dearborn County into the OKI UPWP (4/07)
- 4) Participate in the Indiana MPO Council (ongoing)
- 5) Maintain the Dearborn County component of the OKI 2030 Regional Transportation Plan (6/07)
- 6) Participate with INDOT and Dearborn County on the PDP (on-going)
- 7) Participation in functional class designation and HPMS efforts (as requested)

685.2 Indiana Exclusive: DEARBORN COUNTY TRANSP. PLANNING (STP)
--

OBJECTIVE

The objective of this work element is to supplement core elements of the 3C planning process for Dearborn County. This element will supplement the activities listed in 685.1 and include special (nonrecurring) activities and studies.

PRODUCTS

- 1) Participate with Dearborn County and INDOT on the PDP. (on-going)
- 2) Participation in planning activities to advance specific proposed improvements or studies as appropriate. (on-going)

685.X – I-74 CORRIDOR PLAN – DEARBORN COUNTY

OBJECTIVE

The Objectives of this work element are: to manage The I-74 Infrastructure and Land Use Plan; to plan the timing, location and cost of anticipated development activities, addressing land use, environmental protection, and public facilities and services in the I-74 corridor that will enhance the vitality of Dearborn County and the greater region; and to produce a “small area” plan for land adjacent to I-74 from Sunman, Indiana to Edgewood Rd./Dry Fork Rd. in Harrison Township, Ohio.

PRODUCTS

Final Report (9/07)

686.1 – Kentucky Exclusive: I-471 CORRIDOR STUDY

OBJECTIVE

The project commenced in FY2007 for the conduct of a transportation study to develop, evaluate and prioritize possible improvements to what is identified as the I-471 Corridor. The proposed study area is located in Campbell County and is generally defined as the I-471 corridor from the Ohio River to Northern Kentucky University (NKU). Also included in the study area is KY-8 from I-471 on the east to the Taylor Southgate Bridge on the west and US-27 in the vicinity of NKU.

PRODUCTS

- 1) A strategic plan that identifies and prioritizes possible improvements to facilitate efficient and safe flow of traffic in the I-471 corridor and the KY-8 corridor from I-471 to the Taylor Southgate Bridge. The study will include an operational and safety analysis of all I-471 interchanges in the corridor. Short term and long term improvements will be identified for each, including signal timing improvements in the area of influence of the interchange and potential design improvements. Interchanges where modification may be the most feasible option will be advanced to Phase II of the study.
- 2) A list of proposed ITS improvements that will allow I-471/KY-8 to continue to run smoothly even with continued growth and development in the corridor. This list will also take into consideration associated arterials and will include possible use of message boards and synchronization of signals along KY-8.
- 3) Estimated emissions reductions based on a recommended strategic plan.
- 4) Final Corridor Study Report including estimated costs. (12/07)

686.3 – Kentucky Exclusive: Safety & Operational Studies

OBJECTIVE

This project will identify alternatives for improving operations and safety for locations as determined by interagency consultation between OKI and KYTC.

PRODUCTS

Prepare a plan that outlines potential solutions that address safety and operational needs. (6/08).

697.1 – TRANSPORTATION SUMMARY

OBJECTIVE

To provide to the public a transportation report summarizing the major findings and activities of the transportation planning process.

PRODUCTS

Transportation Summary (6/08)

710.1 - LOCAL WATER QUALITY ACTIVITIES

OBJECTIVE

To undertake water quality planning activities in Ohio, Kentucky and Indiana, as appropriate and as resources permit.

PRODUCTS

- 1) Collateral materials for Ohio, Northern Kentucky, and Dearborn County watershed management activities, which may include education and outreach materials, fact sheets, and articles in stakeholder newsletters. (as appropriate)
- 2) Meeting notices, agendas, summaries, and related correspondence. (as appropriate)
- 3) Updated base information and recommendations for the OKI Regional Water Quality Management Plan. (as appropriate)

710.2 - GREAT MIAMI DRINKING WATER PROTECTION PROJECT

OBJECTIVE

OKI received a \$69,000 planning category grant from the U.S. EPA under Section 319 of the federal Clean Water Act. Nine project partners will help OKI improve drinking water source protection in the lower Great Miami River watershed.

PRODUCTS

- 1) Documentation of a drinking water source protection plan, a plan to enhance the Groundwater Consortium's protection program, and a draft ordinance for the Village of New Miami (12/07)
- 2) Install two monitoring wells in New Miami's drinking water protection area; documentation of inventories, maps and reports of potential sources of water pollution along the Great Miami River and major tributaries between New Miami and Colerain Township; educational materials and events (12/07)

710.3 - MILL CREEK HEADWATERS PROJECT

OBJECTIVE

OKI received a \$498,010 implementation category grant from the U.S. EPA under Section 319 of the federal Clean Water Act. A dozen project partners will help OKI implement recommendations in both the Mill Creek Total Maximum Daily Load (TMDL) Report and the Upper Mill Creek Watershed Action Plan.

PRODUCTS

- 1) At least 4,000 feet of stabilized streambank; at least 2,000 feet of restored riparian corridor; at least 5 acres of restored floodplain with wetland enhancements (9/08)
- 2) Educational brochure, CD, videotape, and website/newsletter articles; Educational events: field day tours, and stream cleanups (12/08)
- 3) Quality Assurance Project Plan and a monitoring report (9/09)

710.6 - WATER QUALITY PROGRAM

OBJECTIVE

To assess, manage, and protect surface water and groundwater resources in view of regional growth and development and the resultant increased demand.

PRODUCTS

- 1) Water quality public awareness outreach activities. (as appropriate)
- 2) For Ohio EPA, specific products as negotiated in 2007.
- 3) Other Products in response to regional needs and appropriate funding sources. (as appropriate)

720.1 – MOBILE SOURCE EMISSIONS PLANNING

OBJECTIVE

To ensure that OKI's Long Range Transportation Plan and Program contribute to the region's attainment and maintenance of national air quality standards.

PRODUCTS

- 1) Ongoing coordination and consultation with OKI's Board of Directors, OKI Intermodal Coordinating Committees, federal, state and local agencies regarding air quality issues. Preparation of appropriate documentation of Long Range Transportation Plan and TIP conformity. Provision of travel and mobile source emission data to support SIP revisions prompted by changes in local emission control programs and federal standards for ozone and particulate matter.

- 2) Quantification of the air quality and energy benefits of candidate projects for STP, SNK or CMAQ funding as required.

800 - REGIONAL PLANNING ACTIVITIES

800.1 - REGIONAL PLANNING ACTIVITIES

OBJECTIVE

To provide for sustainable development through planning services, data resources, and other information useful to the government, business, and civic sectors.

PRODUCTS

- 1) Provision of various products and information.
- 2) Analyses of national and regional land development trends, conditions, and issues; and technical assistance on issues including land use, zoning, economic development, housing, water and sewer infrastructure, intergovernmental coordination, capital budgeting, and natural systems. (on-going)

Budget



**OHIO KENTUCKY INDIANA REGIONAL COUNCIL OF GOVERNMENTS
 FY 2008 UNIFIED PLANNING WORK PROGRAM
 TABLE 1 ALL ACTIVITIES BY COST OBJECTIVE**

Work Element	SOURCE	Personnel	Consultant	Marketing	Special Purchase	Other Direct	Indirect & Fringes	Total Work Cost
601 Short Range (PL/FTA)								
601	Short Range Planning							
601.1	FY 2008 CPG	PL/FTA	114,635			6,350	191,015	312,000
601.1	¹ CPG Carryover (FY 2007)	PL/FTA	33,005				54,995	88,000
602 TIP (PL/FTA)								
602	Tranportation Improvement Program							
602.1	FY 2008 CPG	PL/FTA	39,080		11,000	3,800	65,120	119,000
602.1	FY 2007 STP Carryover	STP	13,127				21,873	35,000
605 Surveillance (PL/FTA)								
605	Surviellance							
605.1	FY 2008 CPG	PL/FTA	439,590		10,000	64,450	732,489	1,246,529
605.1	¹ CPG Carryover (FY 2007)	PL/FTA	140,269				233,731	374,000
610 Long Range Planning								
610	Long Range							
610.1	System Management (CPG)							
610.1	FY 2008 CPG	PL/FTA	294,434	110,000		14,950	490,616	910,000
610.1	¹ CPG Carryover (FY 2007)	PL/FTA	86,637				144,363	231,000
610.4	Land Use Planning (STP)							
610.4	FY 2008 STP (ODOT PID #76556)	STP	124,184			24,419	206,927	355,530
610.4	FY 2007 STP Carryover	STP	19,503				32,497	52,000
625 Services (PL/FTA)								
625	Participation Plan							
625.2	FY 2008 CPG	PL/FTA	46,400			1,285	77,315	125,000
625.2	¹ CPG Carryover (FY 2007)	PL/FTA	13,877				23,123	37,000
665 Special Studies								
665.4	Regional Ozone Reduction (CMAQ) (FY08 ODOT PID #76559)							
	FY 2008 CMAQ (KY CMAQ/SNK)	CMAQ	64,367	5,000	280,000	36,326	107,256	492,949
	FY 2007 CMAQ Carryover	CMAQ	27,810		309,850		46,340	384,000
667 Commuter Assistance								
667.1	Rideshare FY2008 (CMAQ - OH) (FY08 ODOT PID #76563)	CMAQ	27,141		244,413	38,750	45,226	355,530
	Rideshare FY2007 (CMAQ Carryover)	Carryover	25,879		30,000		43,121	99,000

¹ FY07 ODOT CPG Funds to be partnered with FY08 KYTC PL/FTA funds

**OHIO KENTUCKY INDIANA REGIONAL COUNCIL OF GOVERNMENTS
 FY 2008 UNIFIED PLANNING WORK PROGRAM
 TABLE 1 ALL ACTIVITIES BY COST OBJECTIVE**

Work Element	SOURCE	Personnel	Consultant	Marketing	Special Purchase	Other Direct	Indirect & Fringes	Total Work Cost
674 Transit								
674.1	JARC / New Freedom FY2008	FTA	34,941			800	58,222	93,963
674.1	JARC / New Freedom FY07 carryover	FTA	33,642				56,058	89,700
684 Ohio Exclusive								
None programmed in FY08								
685 Indiana Exclusive								
685.1	Dearborn County (INDOT) FY2008	CPG	3,907			400	6,509	10,816
685.2	Dearborn County (INDOT - LU)	STP	7,351			400	12,249	20,000
685.2	Dearborn County (INDOT-TIP&LU) c/o	STP	4,651				7,749	12,400
686 KY Exclusive								
686.1	I-471 Corridor Study - carryover	CMAQ	18,213	319,352		2,086	30,349	370,000
686.3	Safety and operational Studies	PL/FTA	29,013			300	48,345	77,658
697 Trans Annual Summary (PL/FTA)								
697.1	Transportation Annual Summary FY 2008 CPG	PL/FTA	3,561			2,505	5,934	12,000
710 Water Quality								
710	Ohio EPA Program							
710.6	604 (b)	OEPA	18,512			5,970	30,846	55,328
Section 319								
710.3	Millcreek Head Waters Project	OEPA	21,580	65,000		763,660	35,960	886,200
710.2	Great Miami Drinking Water Protection	OEPA	936			34,505	1,559	37,000
710.1	Local Funded Activities	OKI	17,412			9,575	29,013	56,000
720 Air Quality (PL/FTA)								
720.1	Mobile Source Emissions Planning							
720.1	FY 2008 CPG	PL/FTA	12,939			1,500	21,561	36,000
720.1	¹ FY 2007 CPG Carryover	PL/FTA	3,751				6,249	10,000
800 Regional Planning Activities								
800.1	Regional Planning Activities	OKI	29,038			2,575	48,387	80,000
674 Mass Transit Exclusive								
Metro								

**OHIO KENTUCKY INDIANA REGIONAL COUNCIL OF GOVERNMENTS
 FY 2008 UNIFIED PLANNING WORK PROGRAM
 TABLE 1 ALL ACTIVITIES BY COST OBJECTIVE**

Work Element	SOURCE	Personnel	Consultant	Marketing	Special Purchase	Other Direct	Indirect & Fringes	Total Work Cost
TANK Hamilton CTC		See Table 6, Page B-17						
FY 2008 Totals		<u>1,749,384</u>	<u>499,352</u>	<u>864,263</u>	<u>21,000</u>	<u>1,014,606</u>	<u>2,914,998</u>	<u>7,063,603</u>