



IV. ADVISORY COMMITTEE AND PUBLIC INPUT ESTABLISHED PROJECT GOALS

IV. ADVISORY COMMITTEE AND PUBLIC INPUT ESTABLISHED PROJECT GOALS

An important and integral part of this study was the Advisory Committee's establishment of project goals and the solicitation of public input to refine these goals. As the study progressed, the goals served as a solid foundation for the development and evaluation of project alternative solutions. Likewise, as the Advisory Committee continued to evaluate and refine its focus on the transportation problems and needs for the NBTs area and collect public input, the study goals have been continually verified and more comprehensively defined. Every alternative solution considered for incorporation into the final Strategic Plan was evaluated for how it addresses or fits with these goals. The following pages depict the project goals as established by the Advisory Committee with public review and input throughout the course of the study and as presented at the final public involvement meeting.

As emphasized throughout the Northwest Butler Transportation Study, the project goals established by the Advisory Committee are the foundation of the alternative solution development and evaluation and integral to the decision-making process. The advancement of a recommended plan to the OKI Transportation Board for endorsement and incorporation into the regional transportation plan and the ultimate funding and implementation of any proposed improvements will depend on the plan's ability to address the established goals and purpose and need determined in this study.



Figure 6: Integral to the Advisory Committee's decision-making was the recognition of the important relationship of needs, goals and solutions

Travel Efficiency: Improve the movement of people and goods

- Provide an acceptable transportation level of service through the Year 2030
- Better manage truck movement in the Study Area and through Oxford and the Miami University campus
- Promote countywide transit service

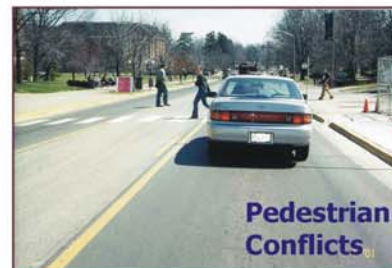
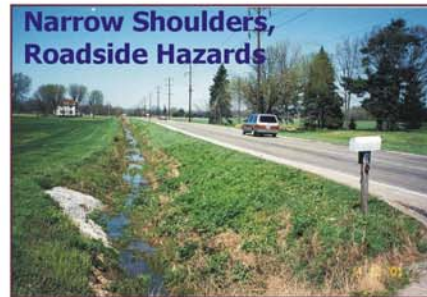


Considerations:

- Focus on US 27 and SR 73 as primary routes for improvement in NBTS area,
- Address identified areas of congestion (intersections, sections of major roads),
- Provide for MU / Oxford regional needs and opportunities for local improvements to be made in conjunction with area-wide plan,
- Improve east - west SR 129 connection in Millville area (for better east - west connectivity),
- Provide for better access management for existing development (and consider access management role in guiding future development),
- Provide better access and level of service for special event traffic,
- Provide separation of through and local travel needs, and
- Consider benefits of other modes of travel including transit, bicycle and pedestrian as part of solution.

Travel Safety: Improve vehicular and pedestrian travel safety

- **Identify and correct existing roadway deficiencies that contribute to unsafe travel**
- **Address vehicular / pedestrian conflict issues on the Miami University campus and in Oxford's Uptown**



Considerations:

- **Address identified safety problem areas (intersections and road sections with high accident rate history),**
- **Upgrade roads to safe standards in terms of lane and shoulder widths,**
- **Reduce vehicular / pedestrian conflict points or areas,**
- **Consider access management needs (existing and future land use), and**
- **Provide separation of through and local travel needs to improve safe property access.**

Improve regional accessibility

- **Improve access and connectivity between the Study Area and regional neighbors**



Miami University



Hueston Woods State Park



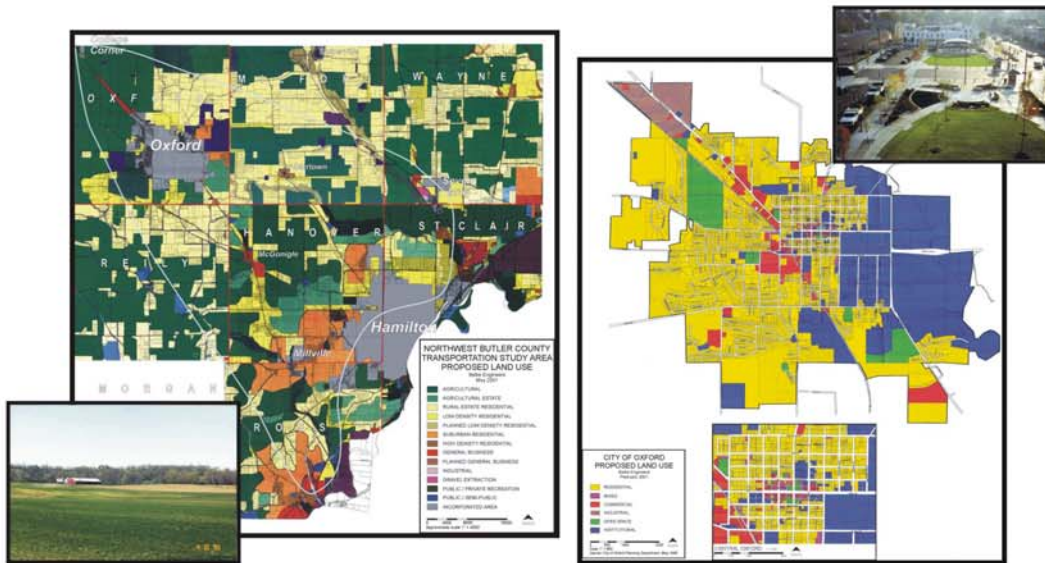
Cincinnati

Considerations:

- Improve north - south through travel facilities
- Provide for improved regional access to economic centers and interest points (Oxford, Miami University, McCollough-Hyde Hospital, Hueston Woods State Park, others)
- Address east - west connectivity needs

Preserve character of area and ensure improvements are compatible with adopted land use plans

- **Ensure that recommended transportation solutions are not only compatible with, but support, adopted land use plans of townships and incorporated communities.**



Considerations:

- **Provide means for growth management and support for adopted township and local long range planning goals,**
- **Avoid / minimize impact on cultural historic resources, parks, natural resources, farmland, and existing development,**
- **Preserve small town character of Oxford and rural landscape and character of NBTS area, and**
- **Support MU and Oxford needs as regional center for area jobs, as well as cultural, educational and entertainment opportunities.**