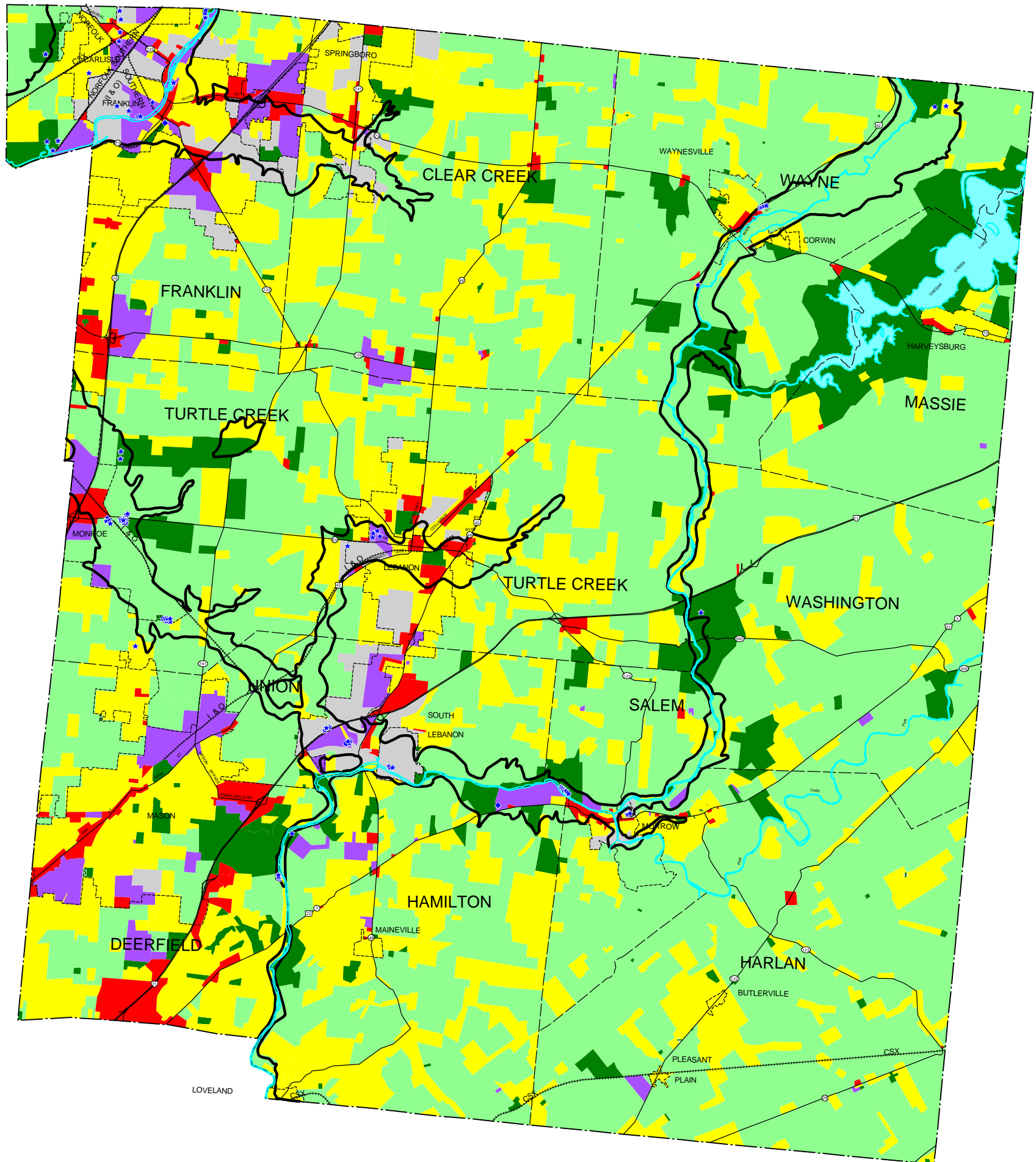


# EXISTING LAND USE OVERLYING THE GREAT MIAMI AQUIFER SYSTEM IN WARREN COUNTY, OHIO SEPTEMBER 2000



**LEGEND**

- |                                  |                        |
|----------------------------------|------------------------|
| Industrial                       | Aquifer Boundary       |
| Commercial                       | County Boundary        |
| Residential                      | Township Boundary      |
| Institutional                    | Municipal Boundary     |
| Agricultural                     | Interstate Roads       |
| Undeveloped                      | U.S. Roads             |
| Unclassified                     | State Roads            |
| Public Water Wells               | Railroads              |
| Industrial Water Withdrawal Site | Lakes, Rivers, Streams |

**NOTES:**

OKI land use aggregation should not be substituted for more specific local land use data.

Land use data is based upon information provided by the Warren County Regional Planning Commission and incorporated jurisdictions in Warren County.

The public water wells and industrial water withdrawal sites are courtesy of Ohio Environmental Protection Agency (OEPA) and Ohio Department of Natural Resources (ODNR)

