



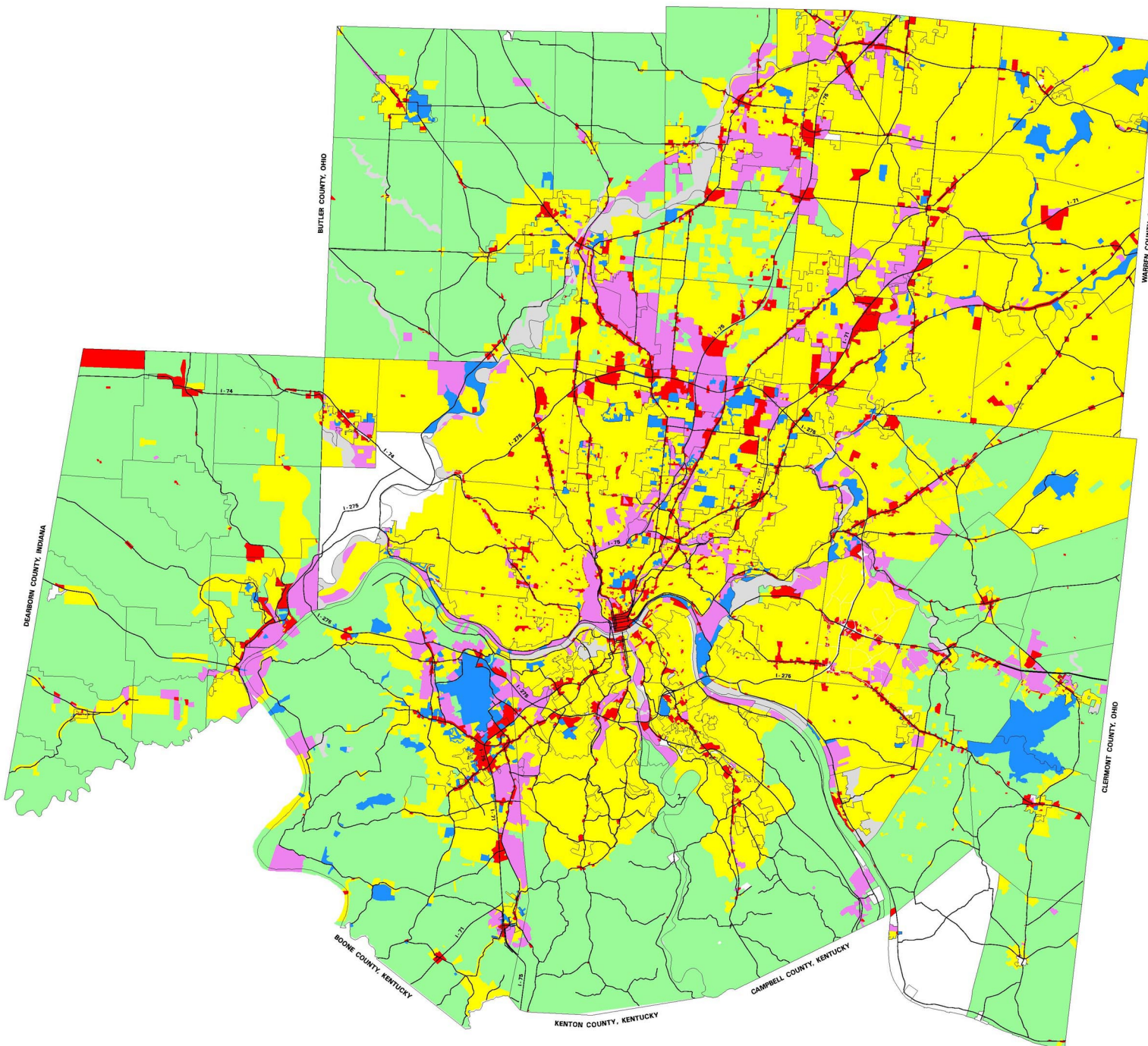
Ohio · Kentucky · Indiana
Regional Council of Governments

LAND USE COMMISSION

EXISTING ZONING

Land Use Categories

- Residential
- Commercial
- Industrial
- Institutional
- Agricultural
- Undeveloped
- Unclassified



Notes :

This map is a compilation of existing zoning data provided in various formats by : Butler County Department of Development; Clermont County Geographic Information Services; Cincinnati Area Geographic Information Services; Hamilton County Regional Planning Commission; Warren County Regional Planning Commission; Dearborn County Plan Commission; Boone County Planning Commission, Northern Kentucky Area Planning Commission, as well as individual communities.

OKI staff aggregated the information provided by each of these entities into the categories shown on this map.

This map is not intended to be substituted for more specific and up-to-date data available from each of the local jurisdictions.



WOOLPERT LLP
 408 East Monument Ave.
 Dayton, Ohio 45402
 937-461-5660
 fax : 937-461-0743
 http://www.woolpert.com

Project ID# 58202

Date : September 10, 2001

Revisions : _____
